

COCONUT GROVE  
PLAYHOUSE

*ARQUITECTONICA*













VIEW 1



3043.0  
**ADDRESS**  
 MIAMI, FL 33133

**COCONUT GROVE PLAYHOUSE**

ARCHITECT OF RECORD  
**ARQUITECTONICA**  
 2900 Oak Avenue  
 Miami, Florida 33133  
 305.372.8112  
 305.572.1175  
 WWW.ARQUITECTONICA.COM

HISTORIC PRESERVATION ARCHITECT:  
 JORGE L. HERNANDEZ ARCHITECT  
 337 PALMWOOD AVENUE  
 CORAL GABLES, FLORIDA 33134  
 T.305.774.9622  
 HTTP://WWW.JHARCHITECT.COM

TREATMENT CONSULTANT:  
 FISHER DACHS ASSOCIATES (FDA)  
 25 WEST 58 STREET  
 NEW YORK, NEW YORK 10011  
 T.212.851.2002  
 HTTP://WWW.FDA-ONLINE.COM

CIVIL, TRAFFIC, PARKING ENGINEER:  
 KIMLEY-HORN & ASSOCIATES, INC.  
 1201 BRICCOLL AVENUE  
 SUITE 400, MIAMI, FLORIDA 33131  
 T.305.595.7746  
 HTTP://WWW.KIMLEY-HORN.COM

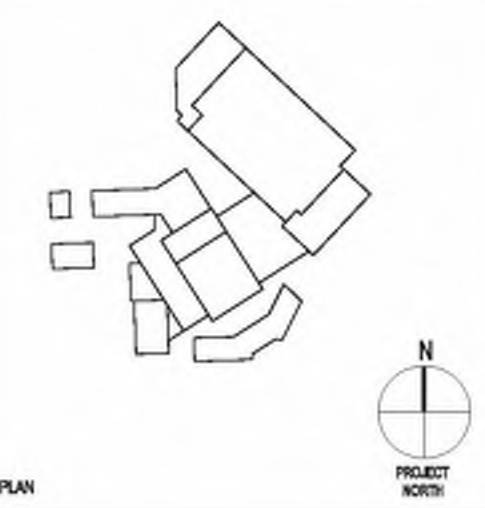
STRUCTURAL ENGINEER:  
 DOUGLAS WOOD & ASSOCIATES  
 5540 N.W. 7TH STREET SUITE 200  
 MIAMI, FLORIDA 33128  
 T.305.451.3400  
 HTTP://WWW.DOUGLASWOOD.BIZ

MEP ENGINEER:  
 FRAGA ENGINEERS, LLC  
 136 NEW CORPUS AVENUE SUITE 100  
 CORAL GABLES, FLORIDA 33134  
 T.305.445.8272  
 HTTP://WWW.FRAGAENG.COM

LANDSCAPE ARCHITECT:  
 ARQUITECTONICA GEO  
 2900 OAK AVENUE  
 MIAMI, FL 33133  
 T.305.372.8112  
 WWW.ARQUITECTONICA.COM

ACCOUNTING, BOUND AND COMMUNICATIONS:  
 TALASKE  
 4335 SOUTH BOLLIVARD  
 DAK PAVIL, 8 8032  
 T.708.641.8902  
 HTTP://WWW.TALASKE.COM

LEED CONSULTANT:  
 THE SPINNAKER GROUP  
 5328 HUNTINGTON  
 WESTON, FL 32622  
 T.864.347.3867  
 HTTP://THESPINNAKERGROUPINC.COM



VIEW 2



VIEW 3

SEAL / SIGNATURE / DATE

Office Registration #AA-0000465  
 Date Issued For

ARQ Project No.: 3388  
 Drawn by: -  
 Approved by: -

BHEET INDEX  
**EXISTING  
 BUILDING  
 PHOTOGRAPHS**  
 SCALE:

BHEET NO.  
**A0.5**  
 © 2015 ARQUITECTONICA INTERNACIONAL, INC.



VIEW 6



VIEW 4



VIEW 5



VIEW 7

3045.0  
ADDRESS

DATE: 11.2015

COCONUT GROVE PLAYHOUSE

PROJECT RECORD  
**ARQUITECTONICA**

200 Oak Avenue  
MAY, 1978 (2015)  
3045-00  
3045-00

ARCHITECT OF RECORD:  
**ARQUITECTONICA**

JOSE L. HERNANDEZ ARCHITECT  
1000 W. UNIVERSITY AVENUE, SUITE 200  
TAMPA, FL 33606

GENERAL CONTRACTOR:  
H&H DAVIS ASSOCIATES (H&A)

MECHANICAL CONTRACTOR:  
KILLEY HORN & ASSOCIATES, P.C.

ELECTRICAL CONTRACTOR:  
DOUGLAS WOOD & ASSOCIATES

PAINT CONTRACTOR:  
FRANK PHOTO FINISH, LLC

LANDSCAPE ARCHITECT:  
TAL JARDI

ENGINEER:  
T.E. SPANMER GROUP

PHOTOGRAPHER:  
ARQUITECTONICA

AGENCY:  
TAL JARDI

DATE:  
NOVEMBER 2015

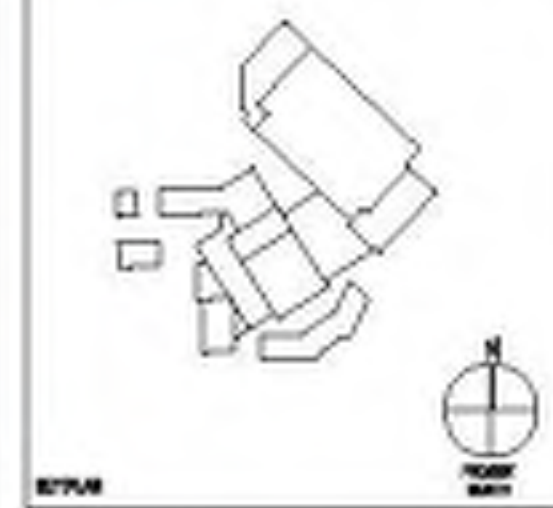
SCALE:  
AS SHOWN

PROJECT NO.:

DATE:

BY:

FOR:



DATE:

BY:

FOR:

DATE:

BY:

FOR:

DATE:

BY:

FOR:

DATE:

BY:

FOR:

DATE:

BY:

FOR:

DATE:

BY:

FOR:

DATE:

BY:

FOR:

DATE:

BY:

FOR:

DATE:

BY:

FOR:

EXISTING  
BUILDING  
PHOTOGRAPHS

A0.6

























3043.0  
ADDRESS  
MIAMI, FL 33133

COCONUT GROVE PLAYHOUSE

ARCHITECT OF RECORD  
**ARQUITECTONICA**

2900 Oak Avenue  
Miami, Florida 33133  
305.572.8192  
305.572.1775  
WWW.ARQUITECTONICA.COM

HISTORIC PRESERVATION ARCHITECT:  
JORGE L. HERNANDEZ ARCHITECT  
237 PALMBO AVENUE  
DORAL, FLORIDA 33134  
1.305.174.9622  
HTTP://WWW.HARCHITECT.COM

TRIGGER CONSULTANT:  
FISHER DACHS ASSOCIATES (FDA)  
25 WEST 18 STREET  
NEW YORK, NEW YORK 10011  
212.581.2822  
HTTP://WWW.FDA-ONLINE.COM

CIVIL, TRAFFIC, PARKING ENGINEER:  
KIMLEY-HORN & ASSOCIATES, INC.  
1201 BRICOLL AVENUE  
SUITE 400, MIAMI, FLORIDA 33131  
786.596.7746  
HTTP://WWW.KIMLEY-HORN.COM

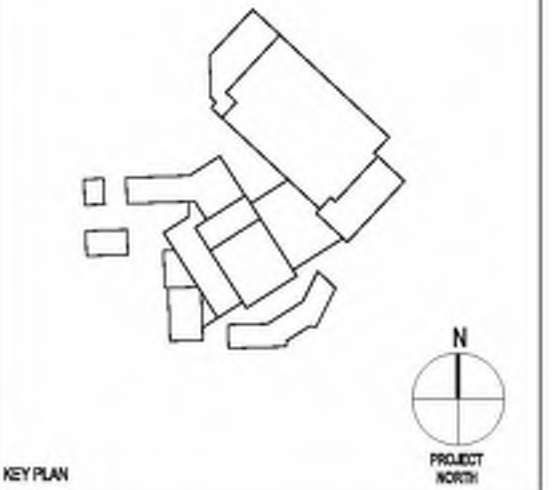
STRUCTURAL ENGINEER:  
DOUGLAS WOOD & ASSOCIATES  
6040 N.W. 7TH STREET SUITE 200  
MIAMI, FLORIDA 33128  
1.305.461.3440  
HTTP://WWW.DOUGLASWOOD.BIZ

MEP ENGINEER:  
FRAGA ENGINEERS, LLC  
136 NEW ORLEANS AVENUE SUITE 800  
DORAL, FLORIDA 33134  
1.305.465.0372  
HTTP://WWW.FRAGAENG.COM

LANDSCAPE ARCHITECT:  
ARQUITECTONICA GEO  
2900 OAK AVENUE  
MIAMI, FL 33133  
1.305.375.1819  
WWW.ARQUITECTONICA.COM

ACCOUNTING, BOUND AND COMMUNICATIONS:  
TALASKE  
833 SOUTH BOLLINGROAD  
DAK PAVIL, 8 8032  
1.708.641.8800  
HTTP://WWW.TALASKE.COM

LEED CONSULTANT:  
THE SPINNAKER GROUP  
5328 HUNTINGTON  
WESTON, FL 33322  
1.866.347.3667  
HTTP://THESPINNAKERGROUP.COM



SEAL / SIGNATURE / DATE

Office Registration #AA-0000465  
Date Issued For

ARQ Project No.: 3388  
Drawn by: -  
Approved by: -

SHEET INDEX

AERIAL  
VIEW

SCALE:

SHEET NO.

A7.2



# APPENDIX



google earth  
© 2005 Copyright

3043.0  
ADDRESS  
MIAMI, FL 33133

**COCONUT GROVE PLAYHOUSE**

ARCHITECT OF RECORD

**ARQUITECTONICA**

2900 Oak Avenue  
Miami, Florida 33133  
305.572.8152  
305.572.1175  
[WWW.ARQUITECTONICA.COM](http://WWW.ARQUITECTONICA.COM)

HISTORIC PRESERVATION ARCHITECT:

JORGE L. HERNANDEZ ARCHITECT  
237 PALMWOOD AVENUE  
CORAL GABLES, FLORIDA 33134  
T.305.774.9022 [HTTP://WWW.HANDHITECT.COM](http://WWW.HANDHITECT.COM)

TRUSTEES CONSULTANT:

FISHER DACHS ASSOCIATES (FDA)  
25 WEST 18 STREET  
NEW YORK, NEW YORK 10011  
T.212.851.3332 [HTTP://WWW.FDA-ONLINE.COM](http://WWW.FDA-ONLINE.COM)

CIVIL, TRAFFIC, PARKING ENGINEER:

KIMLEY-HORN & ASSOCIATES, INC.  
1201 BRICOLL AVENUE  
SUITE 400, MIAMI, FLORIDA 33151  
T.305.596.7746 [HTTP://WWW.KIMLEY-HORN.COM](http://WWW.KIMLEY-HORN.COM)

STRUCTURAL ENGINEER:

DOUGLAS WOOD & ASSOCIATES  
6642 N.W. 7TH STREET, SUITE 200  
MIAMI, FLORIDA 33128  
T.305.451.3440 [HTTP://WWW.DOUGLASWOOD.BIZ](http://WWW.DOUGLASWOOD.BIZ)

MEP ENGINEER:

FRAGA ENGINEERS, LLC  
1500 LAW CENTER AVENUE, SUITE 190  
CORAL GABLES, FLORIDA 33134  
T.305.442.0122 [HTTP://WWW.FRAGAENG.COM](http://WWW.FRAGAENG.COM)

LANDSCAPE ARCHITECT:

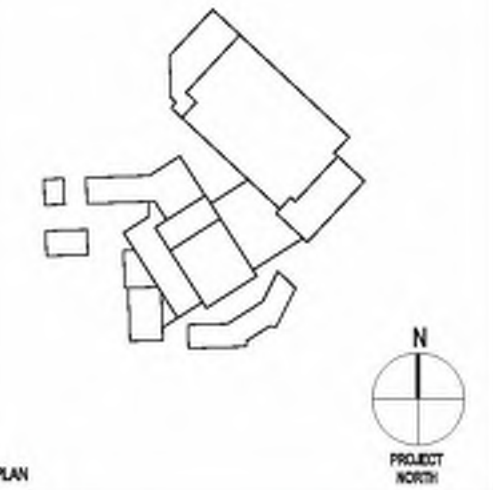
ARQUITECTONICA GEO  
2900 OAK AVENUE  
MIAMI, FL 33133  
T.305.572.1175 [WWW.ARQUITECTONICA.COM](http://WWW.ARQUITECTONICA.COM)

ACCOUNTING, BOUND AND COMMUNICATIONS:

TALASKE  
1025 SOUTH BOLLING ROAD  
DAVE PARK, FL 33032  
T.754.841.8900 [HTTP://WWW.TALASKE.COM](http://WWW.TALASKE.COM)

LEED CONSULTANT:

THE SPINNAKER GROUP  
3228 HUNTINGTON  
WESTON, FL 33327  
T.954.947.5967 [HTTP://WWW.THESPINNAKERGROUP.COM](http://WWW.THESPINNAKERGROUP.COM)



SEAL / SIGNATURE / DATE

Office Registration #AA-0000465

Date Issued For

ARQ Project No.: 3388

Drawn by: -

Approved by: -

SHEET NO.

**EXISTING  
AERIAL  
VIEW**

SCALE:

SHEET NO.

**A7.4**





3043.0  
**ADDRESS**  
 MIAMI, FL 33133

**COCONUT GROVE PLAYHOUSE**

**ARCHITECT OF RECORD**  
**ARQUITECTONICA**

2900 Oak Avenue  
 Miami, Florida 33133  
 305.372.8112  
 305.372.1175  
 WWW.ARQUITECTONICA.COM

**HISTORIC PRESERVATION ARCHITECT:**  
 JORGE L. HERNANDEZ ARCHITECT  
 237 PALMWOOD AVENUE  
 CORAL GABLES, FLORIDA 33134  
 T.305.174.9022  
 HTTP://WWW.JHARCHITECT.COM

**TRIGGER CONSULTANT:**  
 FISHER DACHS ASSOCIATES (FDA)  
 25 WEST 18 STREET  
 NEW YORK, NEW YORK 10011  
 T.212.81.2000  
 HTTP://WWW.FDA-ONLINE.COM

**CIVIL, TRAFFIC, PARKING ENGINEER:**  
 KIMLEY-HORN & ASSOCIATES, INC.  
 1201 BRICOLL AVENUE  
 SUITE 400, MIAMI, FLORIDA 33131  
 T.305.595.7745  
 HTTP://WWW.KIMLEY-HORN.COM

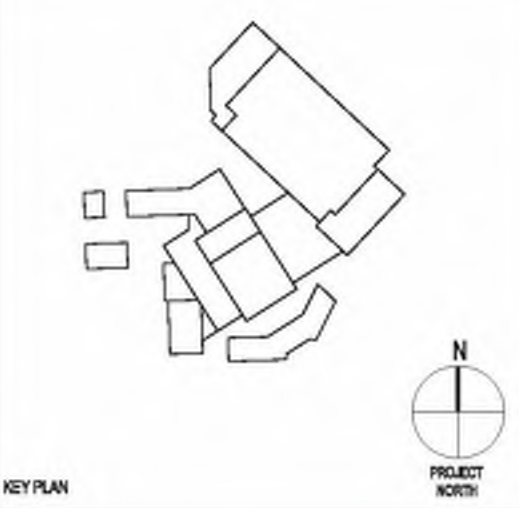
**STRUCTURAL ENGINEER:**  
 DOUGLAS WOOD & ASSOCIATES  
 5542 N.W. 7TH STREET SUITE 200  
 MIAMI, FLORIDA 33128  
 T.305.451.3400  
 HTTP://WWW.DOUGLASWOOD.BIZ

**MEP ENGINEER:**  
 FRAGA ENGINEERS, LLC  
 126 NEW ORLEANS AVENUE SUITE 100  
 CORAL GABLES, FLORIDA 33134  
 T.305.442.5172  
 HTTP://WWW.FRAGAENG.COM

**LANDSCAPE ARCHITECT:**  
 ARQUITECTONICA GEO  
 2900 OAK AVENUE  
 MIAMI, FL 33133  
 T.305.372.1812  
 WWW.ARQUITECTONICA.COM

**ACCOUNTING, BOUND AND COMMUNICATIONS:**  
 TALASKE  
 1025 SOUTH BOLLING ROAD  
 DAKOTA PARK, FLORIDA 33003  
 T.708.641.8900  
 HTTP://WWW.TALASKE.COM

**LEED CONSULTANT:**  
 THE SPINNAKER GROUP  
 5328 HUNTINGTON  
 WESTON, FL 33092  
 T.954.347.3867  
 HTTP://THESPINNAKERGROUPINC.COM



SEAL / SIGNATURE / DATE

Office Registration #AA-0000465  
 Date Issued For

ARQ Project No.: 3388  
 Drawn by: -  
 Approved by: -

**EXISTING STREET VIEW**

SCALE:

**A7.6**

© 2015 ARQUITECTONICA INTERNACIONAL, INC.