

Miami-Dade County  
Department of Cultural Affairs  
Art in Public Places

MSC Miami Cruise Terminal  
Terminal AA/AAA  
PortMiami



*Rendering courtesy of Arquitectonica*

## Detailed Description

The MSC Miami Cruise Terminal at PortMiami, to be located on the easternmost site of the Port, will be the last terminal viewed by every departing cruise ship and the first terminal viewed by every returning ship. The terminal building will be Miami's largest cruise ship terminal with the capacity to service 3 ship berths and process 36,000 passengers daily.



*Rendering courtesy of Arquitectonica*

The building program for the MSC Miami Cruise Terminal AA/AAA includes approximately 483,000 SF to accommodate three cruise ships that will dock at Berths 8, 9 and 10 at the Port of Miami. The terminal will accommodate the embarking of a maximum of 18,000 passengers and a debarking of the same volume. Two boarding concourses stacked will extend to Berth 9 and connect to the ships via four passenger boarding bridges. The full concourse for Berth 10 is not included in the scope of work of this project and is part of a future phase. Also included is a parking garage for approximately 2400 vehicles, a bus ground transportation area at Level 1 and a vehicle drop off and pick-up area on Level 2. Self-parking will be Levels 3 through 6.



## Interior Light-Based Artwork

*Rendering courtesy of Arquitectonica*

Artists are invited to propose a large-scale light-based artwork(s) that will transform the interior of the terminal to create a dynamic scene in the evening and be prominently visible from the adjacent I-395 MacArthur Causeway. Light and time-based mediums may include but are not limited to video projection mapping, screen-based artworks, or sculptural – fixture based artworks. It is envisioned that this artwork will reflect themes of marine life, water, and ecological conservation.



Danielle Roney Studio



Tamara Kostianovsky



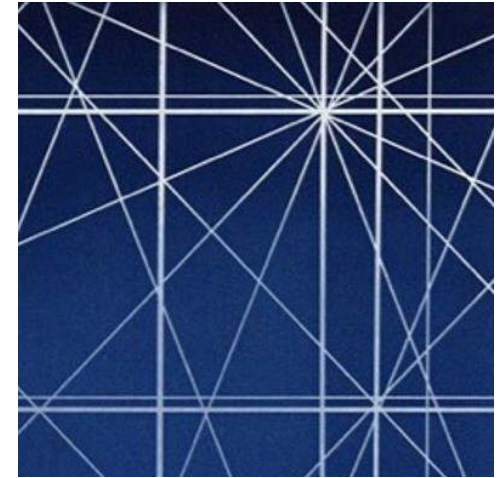
Hugh Hayden



Lauren Shapiro



Mark Fleuridor



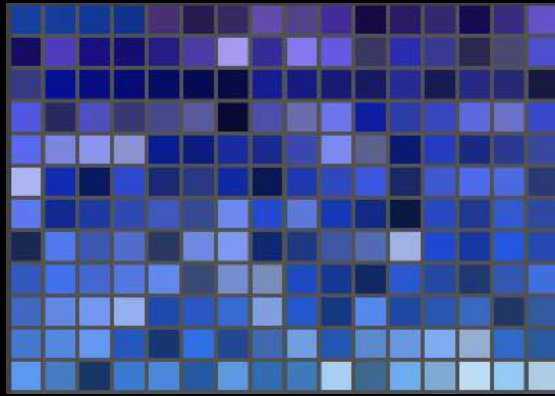
Juana Valdes

DANIELLE RONEY  
STUDIO

LIVING DATA SETS



SPECIES

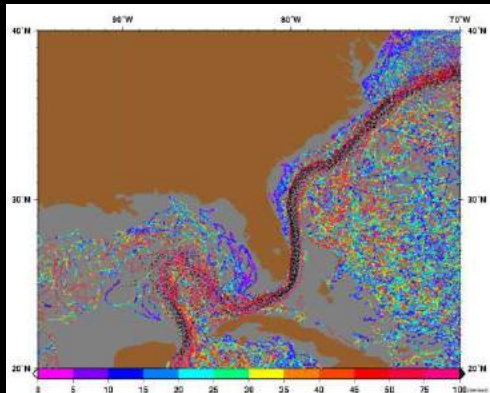


SPECIES COLOR PALETTE

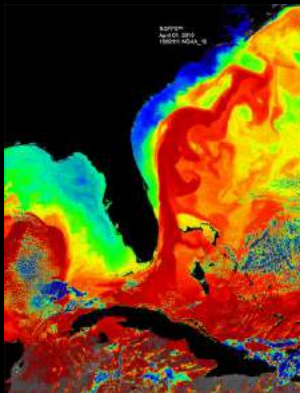


FLUID DYNAMICS: PARTICULATE STUDIES

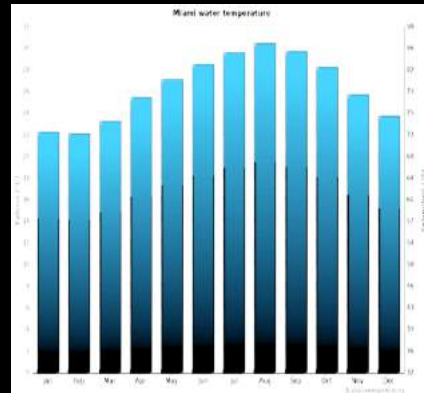
DATA SUBSETS - DAILY DATA INPUTS



TIDES



CURRENTS



OCEAN TEMPERATURE

The generative animations triggered by publicly available data will update **DAILY** and **ANNUALLY** based on specific data subsets.

**Living Data** effects many aspects of the fluid dynamics and particulate animations generated through **Pace**, **Flow**, **Color Palette** & **Lifespan** of each particle.

*The Eddies*



*The Eddies*

CONCEPT PROPOSAL | INTERIOR LIGHT-BASED ARTWORK | 07.22.22  
MSC MIAMI CRUISE TERMINAL AA/AAA AT PORTMIAMI

DANIELLE RONEY STUDIO





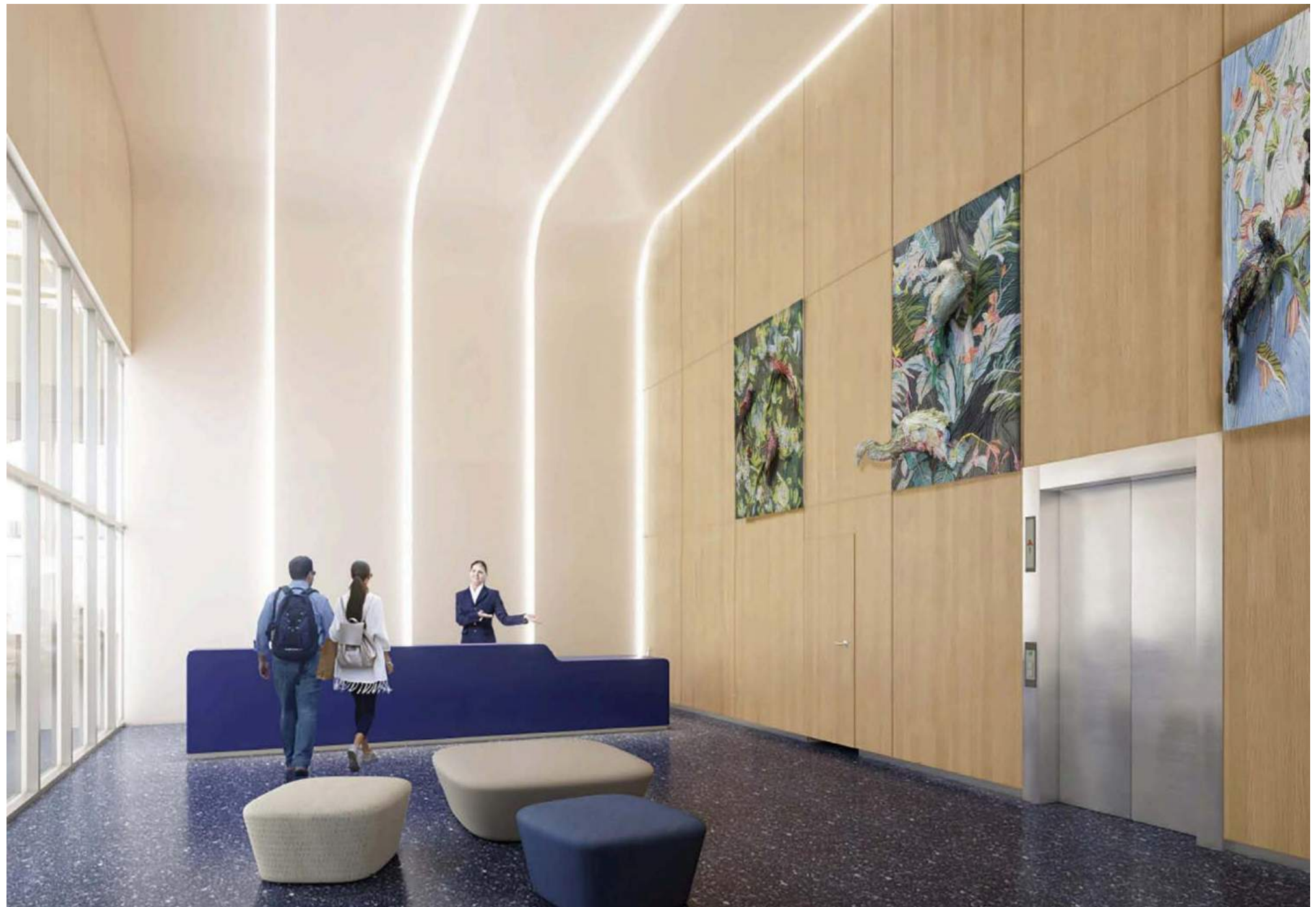


 MSC

TAMARA  
KOSTIANOVSKY







HUGH HAYDEN

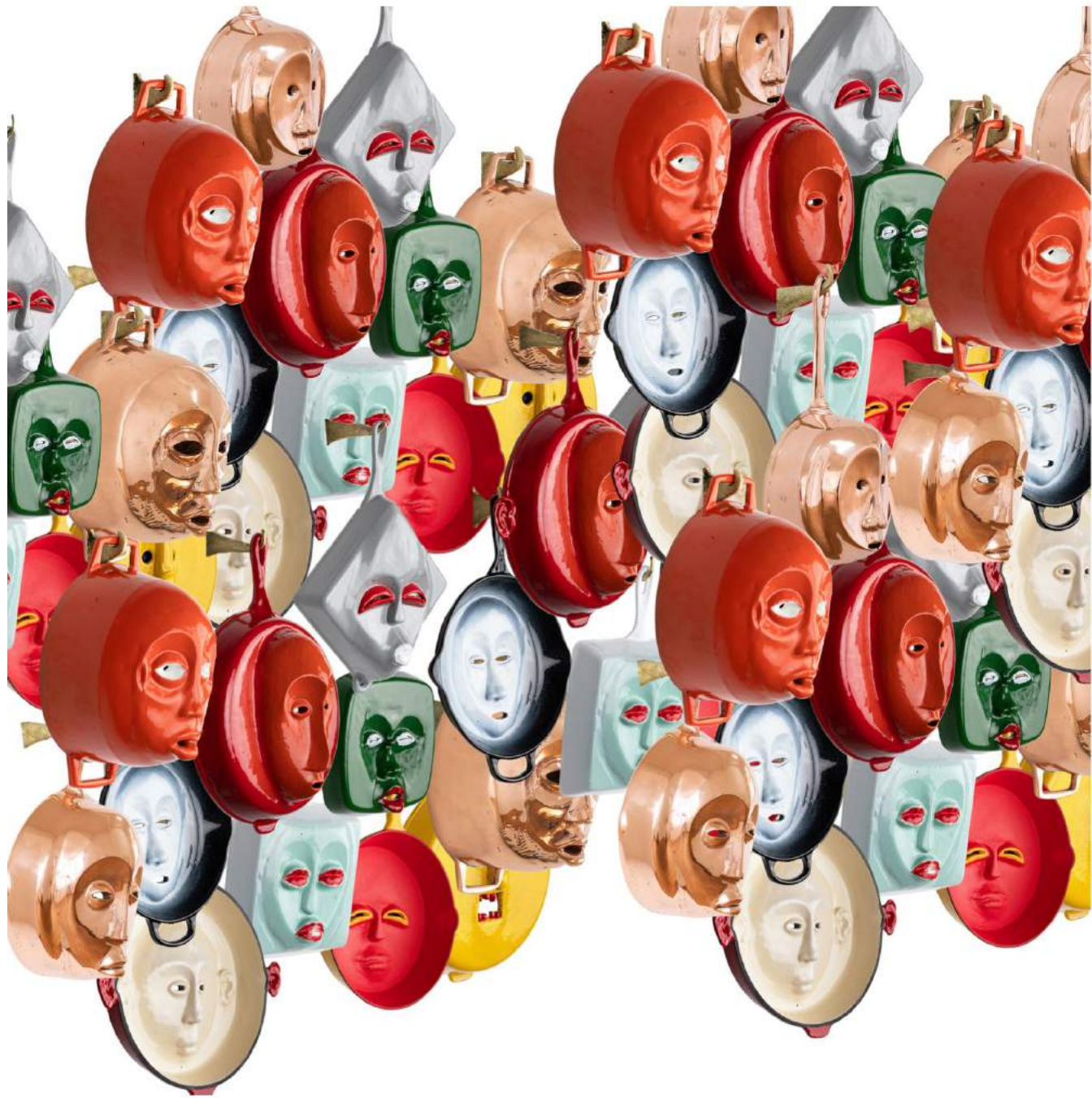


*Choir*, 2020, 8 enameled cast iron skillets, 3 copper plated skillets, and 3 seasoned cast iron skillets



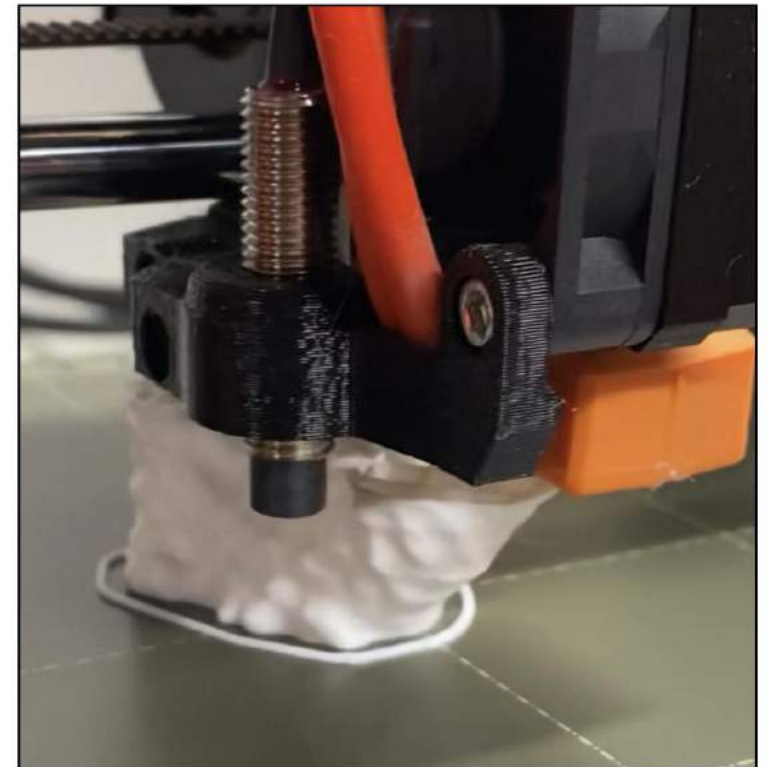
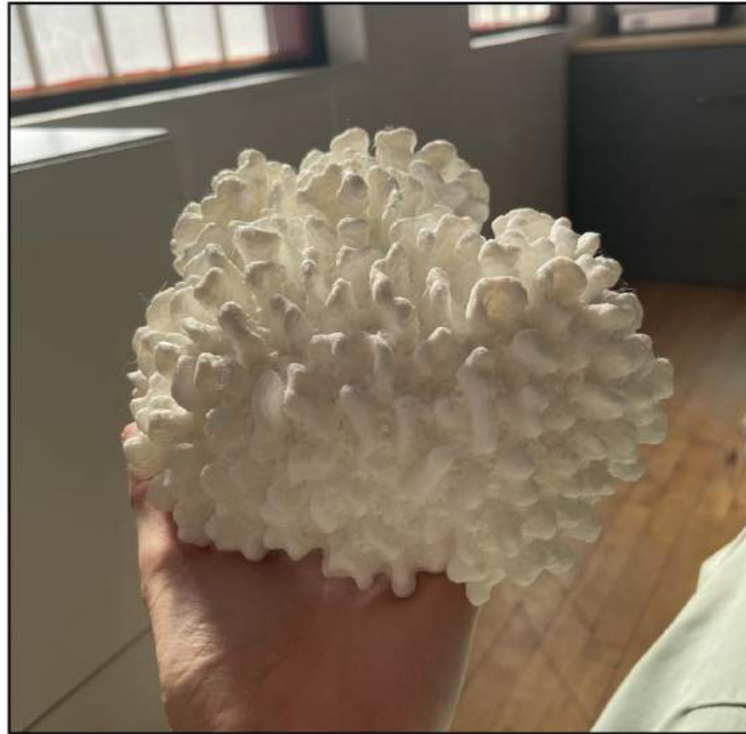


Various cast iron skillet works





LAUREN SHAPIRO



Ceramic elements in the artwork are castings from 3D-printed models of corals.



An installation of 145 uniquely molded ceramic sculptures. The installation references a coral reef ecosystem from the perspective of a snorkeler.

33' - 8 1/4" W x 19' - 3 1/4" H

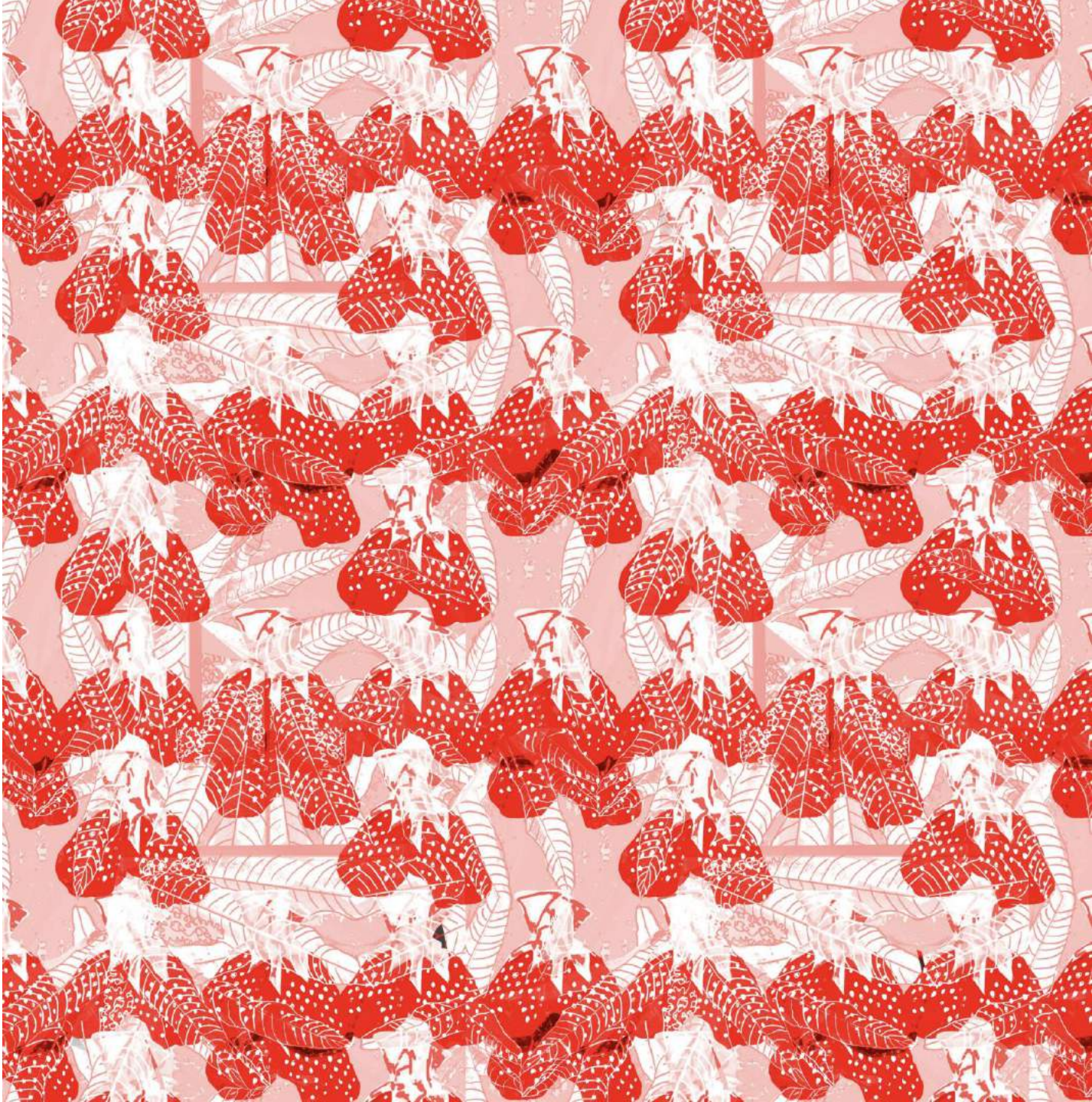
Over the Reef  
VIP Lounge Wall Installation



MARK  
FLEURIDOR

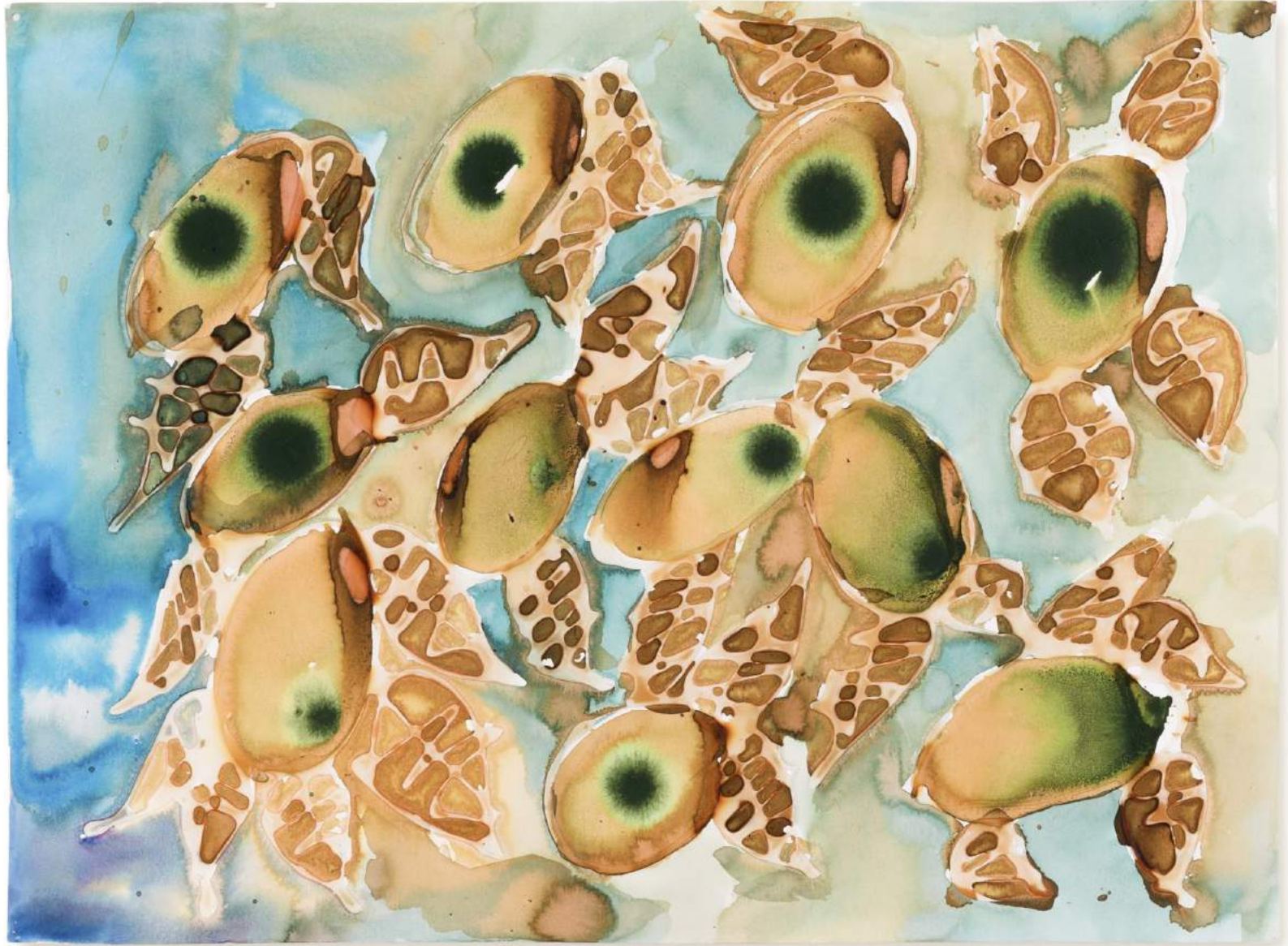












**JUANA VALDES**



JUAN VALDES



TERRESTRIAL BODIES

Textual information on the wall panel.

Explosion

Completa

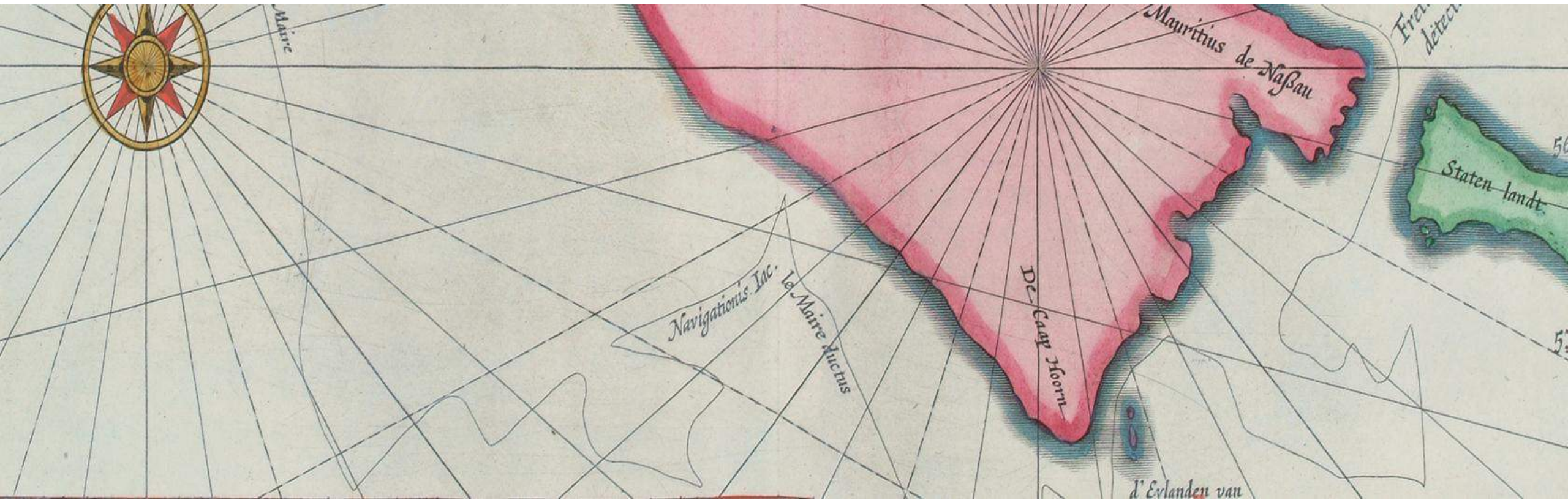
Nigerian

1500

1870



The Oldest Cartographic artifact in Library of Congress Nautical Map Mediterranean Sea 14<sup>th</sup> century

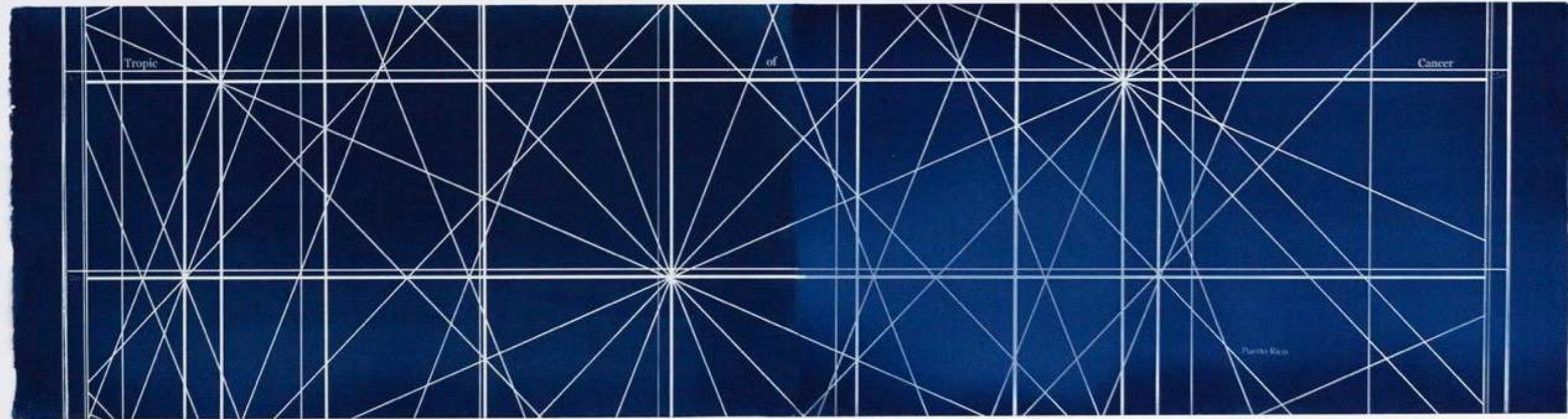


Ptolemy's most important geographical innovation was to record longitudes and latitudes in degrees for roughly 8,000 locations on his world map, making it possible to make an exact duplicate of his map.

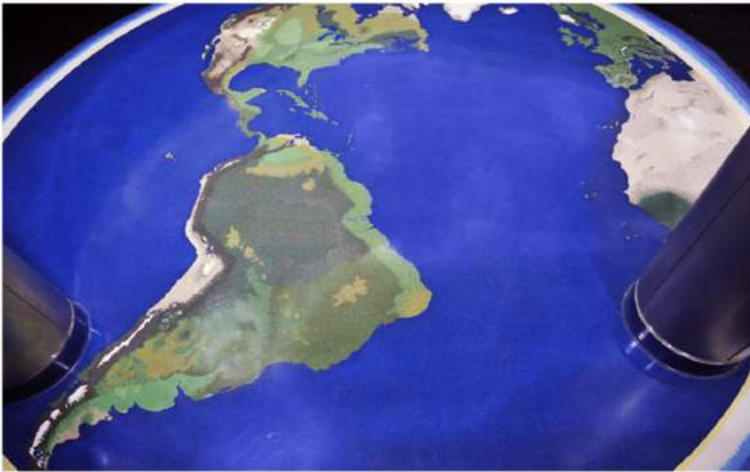


Material :Terrazzo Floor

Concept: The first use of longitudinal and latitudinal lines as well as specifying terrestrial locations by celestial observations.



Cyanotype Map 21" x 79" on paper



David Allen Company's Terrazzo Teams have won 75 percent more National Terrazzo and Mosaic Honor Awards for quality installations than all the other terrazzo contractors in the Southeast combined. Our Terrazzo department has installed more than 50 million square feet of terrazzo.