

ART IN  
PUBLIC  
PLACES  
MIAMI-DADE COUNTY

Miami-Dade County  
Art in Public Places  
Department of Cultural Affairs



# MIAMI-DADE COUNTY ART IN PUBLIC PLACES A NATIONALLY RENOWNED PUBLIC ART COMMISSIONING PROGRAM

Established 1973

Celebrating a 50 year Anniversary, Art in Public Places is one of the first public art programs in the United States.

Art in Public Places was established in 1973 with the passage of an ordinance allocating 1.5% of capital costs of new local government buildings for the purchase or commission of artworks in Miami-Dade County.

Art in Public Places is overseen by a citizens' Trust appointed by the Board of County Commissioners. The Trust receives recommendations on acquisitions and commissions from the Professional Advisory Committee, an independent group of professionals in the field of art, art history, public art, architecture, landscape architecture and architectural history.



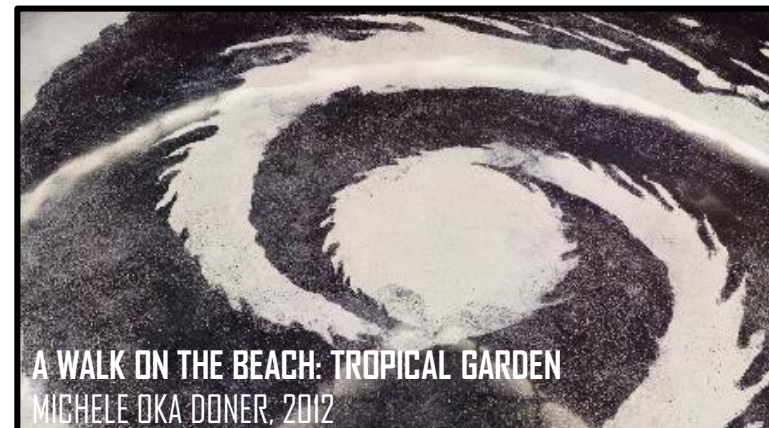
# SIGNATURE PROJECTS / MIAMI-DADE COUNTY ART IN PUBLIC PLACES



**THE MIAMI LINE**  
ROCKNE KREBS, 1984



**DROPPED BOWL WITH SCATTERED SLICES AND PEELS**  
CLAES OLDENBURG & COOSJE VAN BRUGGEN, 1990



**A WALK ON THE BEACH: TROPICAL GARDEN**  
MICHELE OKA DONER, 2012



**ZIFF BALLET OPERA HOUSE**  
JOSE BEDIA, 2006



**RED M**  
ROSARIO MARQUARDT & ROBERTO BEHAF, 1996, 2022



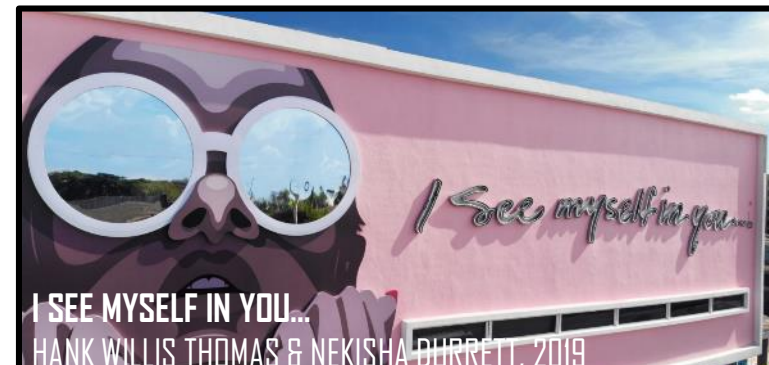
**THE BOLLARD PROJECT**  
JIM DRAIN, 2012



**SPACE MOVING LIGHT**  
TOMAS SARACENO, 2018



**CHROMATIC INDUCTION IN A DOUBLE FREQUENCY**  
CARLOS CRUZ-DIEZ, 2012



**I SEE MYSELF IN YOU...**  
HANK WILLIS THOMAS & NEKISHA BURRETT, 2019



# Resources

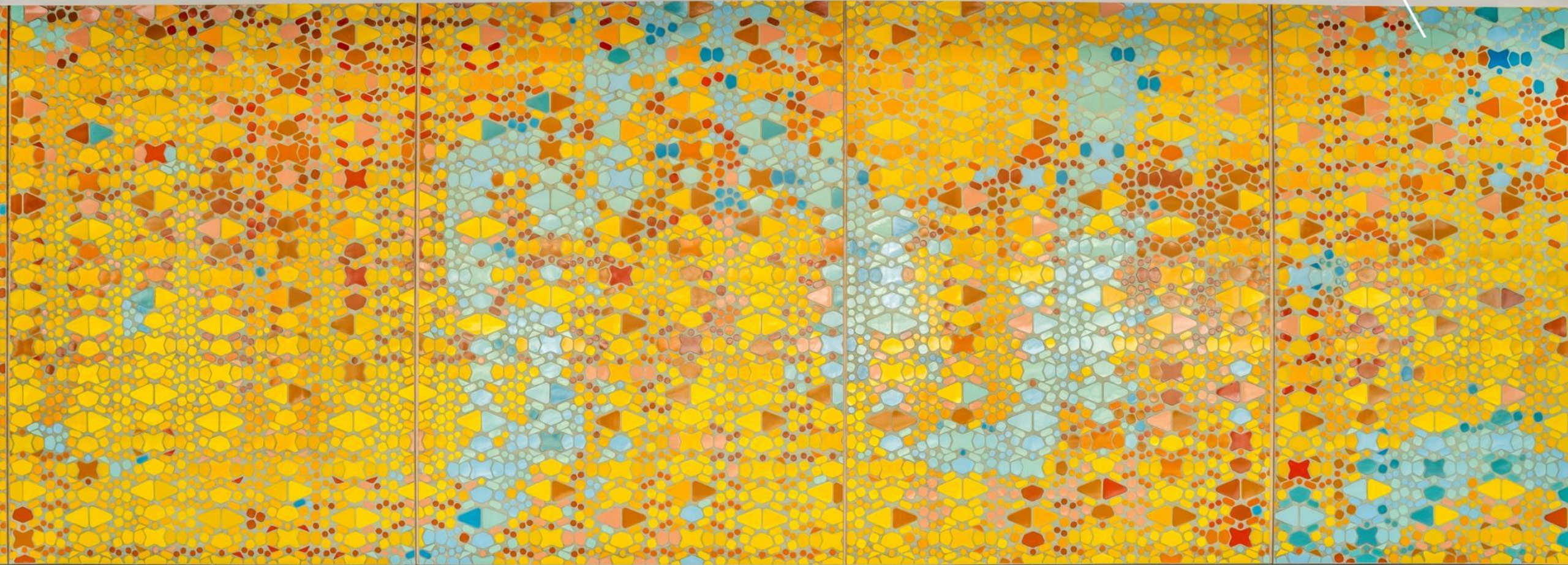
Visit us at: [www.miamidade.gov/publicart](http://www.miamidade.gov/publicart)

A Guide to Art in Public Places  
Procedures Manual No. 358

Miami-Dade Art in Public Places Ordinance  
APP Language for Inclusion in Project RFPs  
Contact Information for APP Staff



Edouard Duval-Carrié, *Oak Grove Rhapsody*, 2019  
Father Gerard Jean-Juste Community Center, Oak Grove Park





# HALLMARKS

Client Driven

Delivering Great Works of Art On-Time & Budget

APP Adds Value to any Project

APP is a All-Inclusive & Fixed Project Component:  
Artwork, Project Management, and Maintenance



Christina Lei Rodriguez, *Homegrown*, 2021  
Image Zach Balber  
Westchester Cultural Arts Center

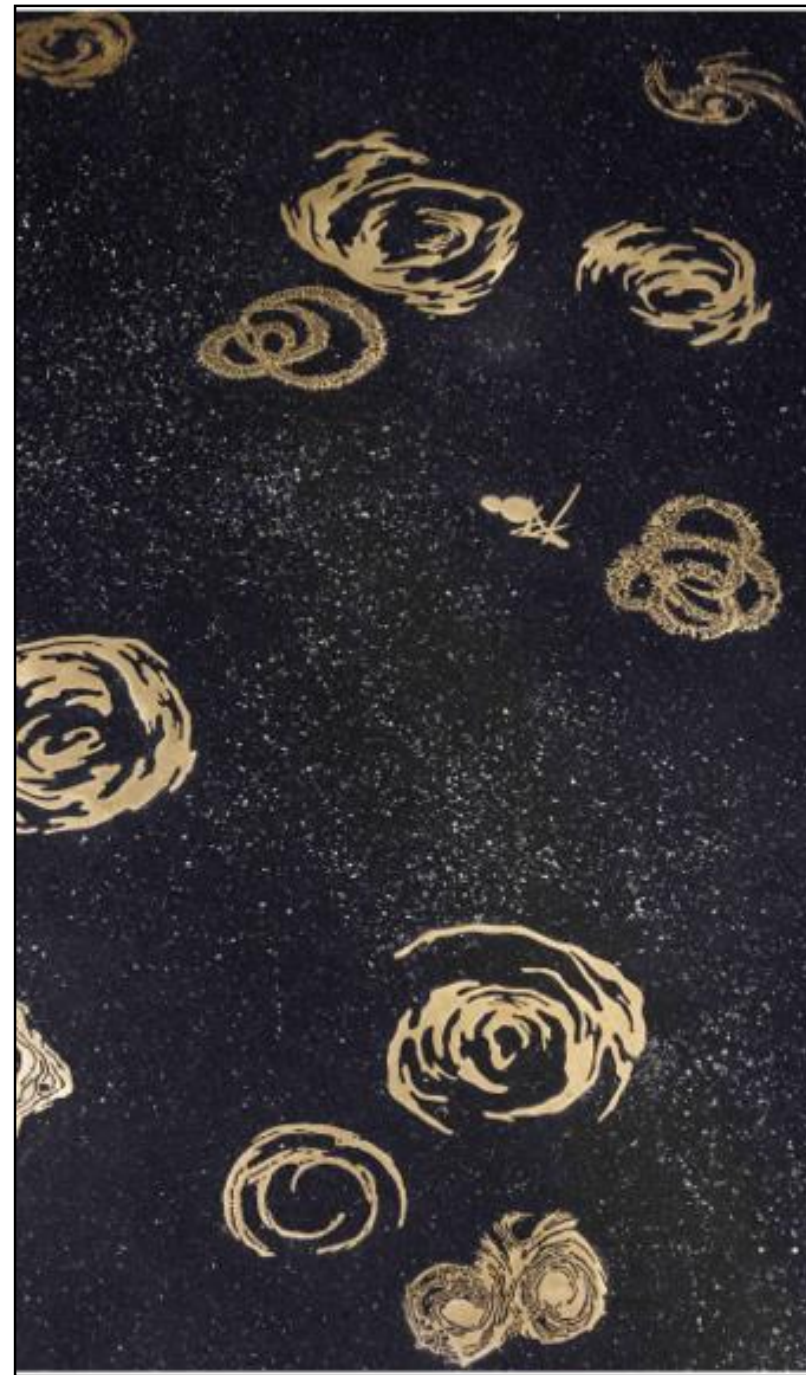
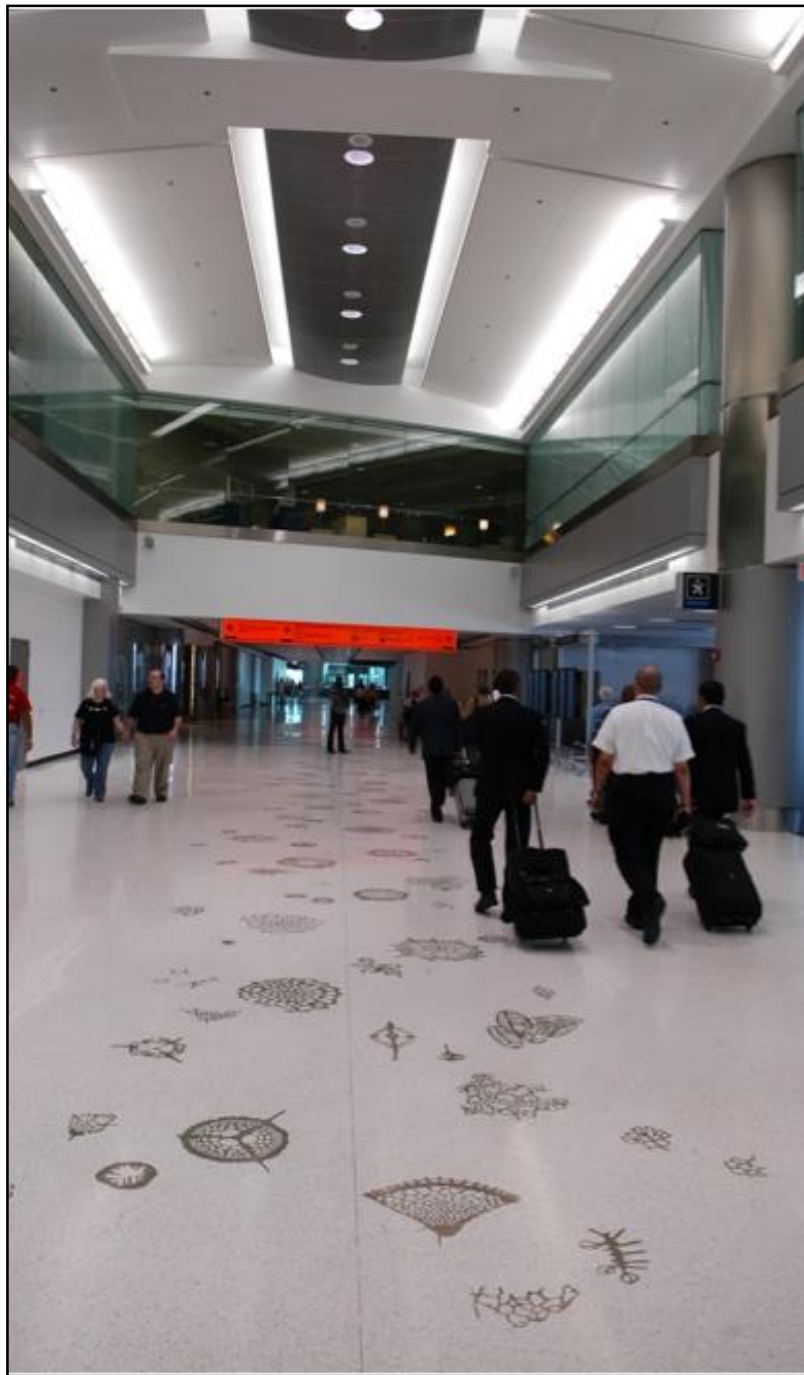








Michele Oka Doner, *A Walk on the Beach*, 1995  
Miami International Airport Concourse D



# Planning

## Planning Phase

APP and Client meet in the early stages of a capital project to define opportunities for public art collaboration including scope of work, budget, and timetable



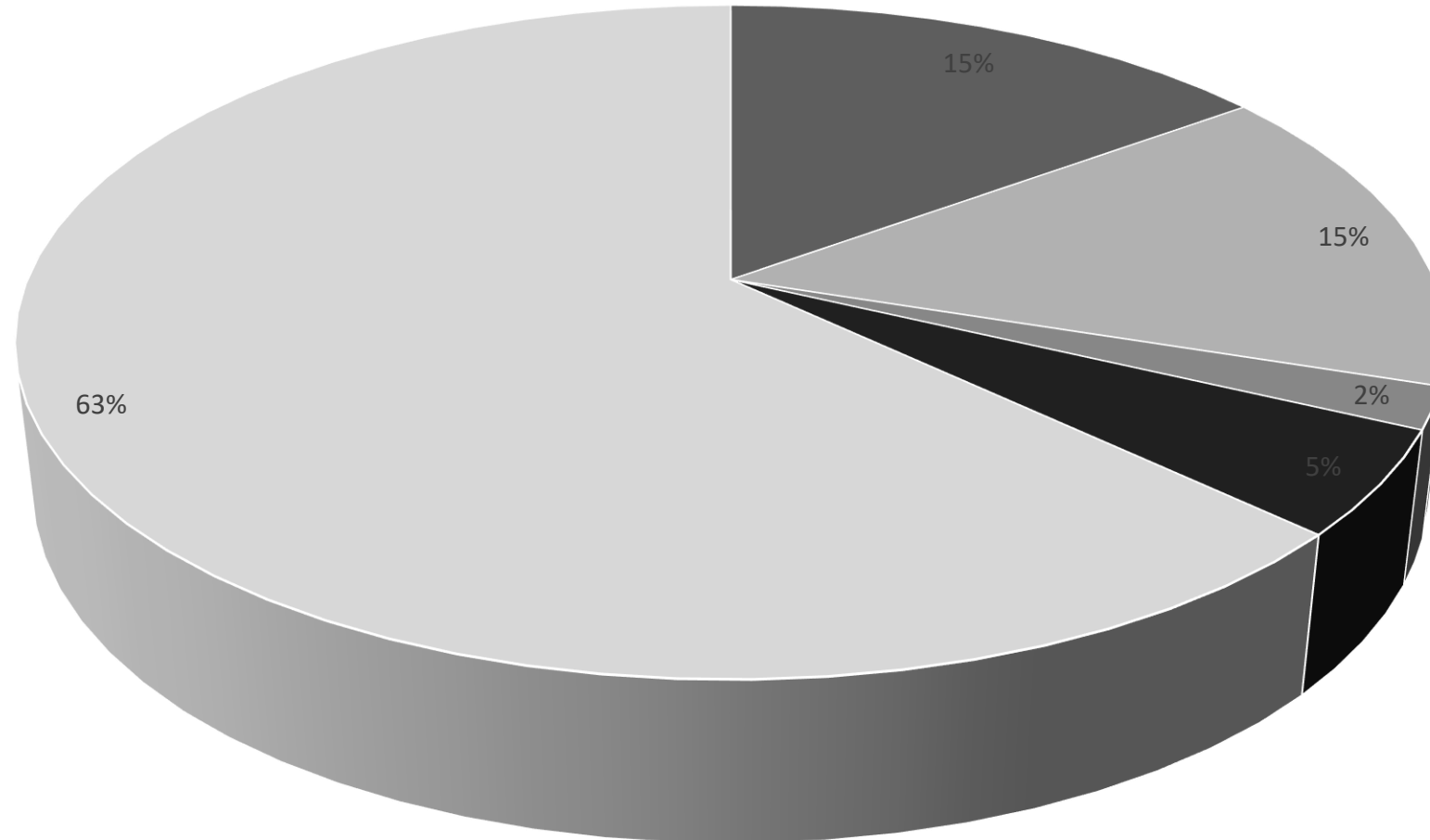
Franky Cruz, *Between Destiny and a Hard Place*, 2023  
Gallery on the River



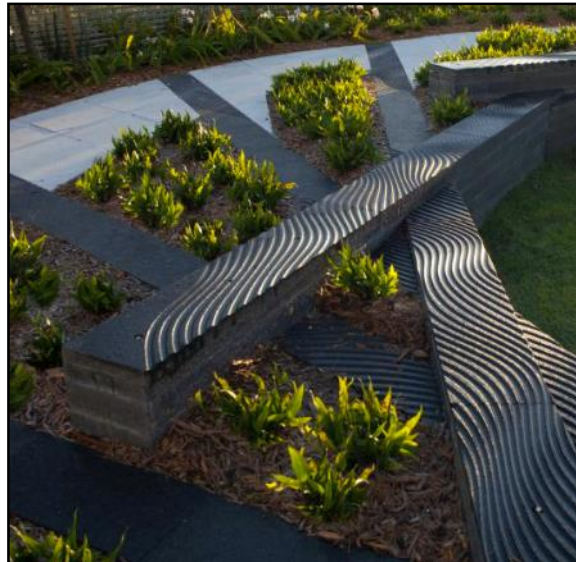
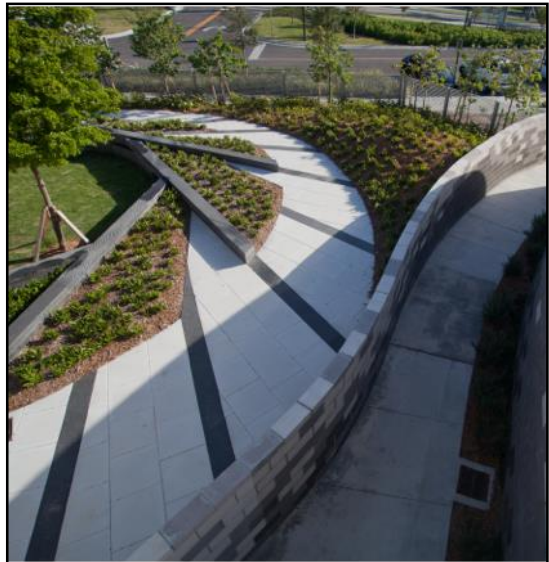
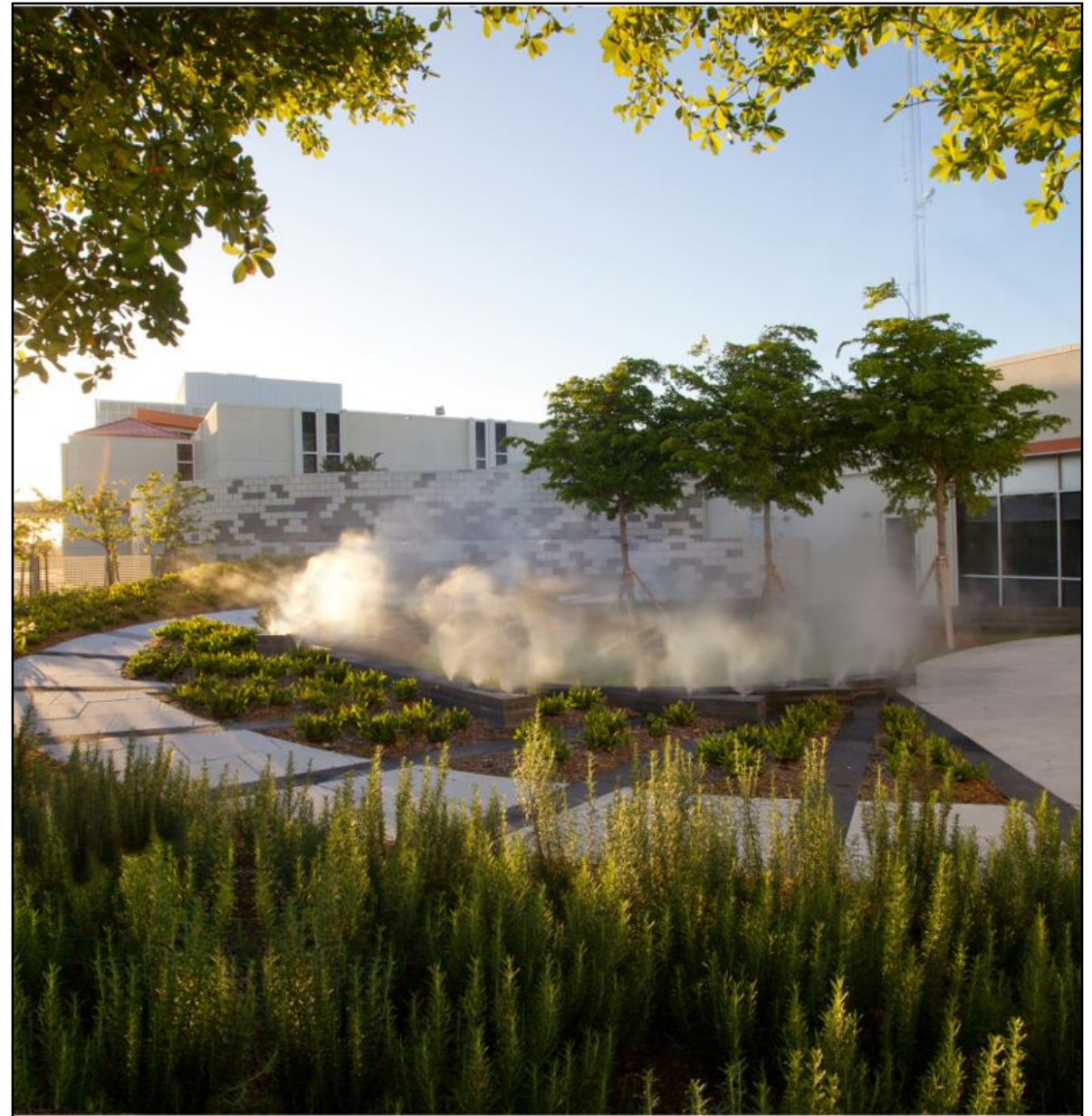


# Funding Allocation

Breakdown of 1.5% Art in Public Places Allocation



■ 15% Administration ■ 15% Maintenance Fund ■ 2% Proposal Fees ■ 5% Internal Contingency ■ 63% Artist Commission



Mikyong Kim, *Ripple Garden*, 2011, Jackson South Hospital



# Artist Selection

APP drafts Call to Artists (RFQ)  
Shortlist of Qualified Artists develop artwork proposals  
Winning Proposal(s) are recommended for  
implementation



Molly Aubry, *Bioluminescent Portals*, 2022  
Anastasia Samoylova, *Miami River Series*, 2022  
Gallery on the River

# Professional Advisory Committee

The Miami-Dade Art in Public Places Professional Advisory Committee (PAC) is responsible for recommending acquisitions or commissions of public art to the Miami-Dade County Art in Public Places Trust. These artworks should add value to Miami-Dade County's public art collection, enhance the places where they are located, attract national attention, vitalize our County's visual signature, celebrate the diversity and heritage of Miami-Dade County, strengthen economic development and tourism, heighten civic identity, and enrich the spirit and pride of our citizens. This committee is made up of individuals who are experts in the field of art, architecture, and design. PAC members serve terms of two years, with the opportunity to renew for 3 consecutive terms, and are appointed by the Art in Public Places Trust.



Dejha Carrington, Commissioner



Leslie Goldberg, Perez & Perez Architects



Melissa Hunter Davis, Sugarcane Magazine



Jennifer Inacio, PAMM



Omar Lopez-Chahoud, Untitled / Yes Contemporary



Gean Moreno, ICA Miami, NAME Publications



Chana Sheldon, MOCA North Miami



Jason Tapia, Building Center No. 3



Wanda Texon, New World School of the Arts



Marie Vickles, PAMM



James Voorhies, Bass Museum of Art

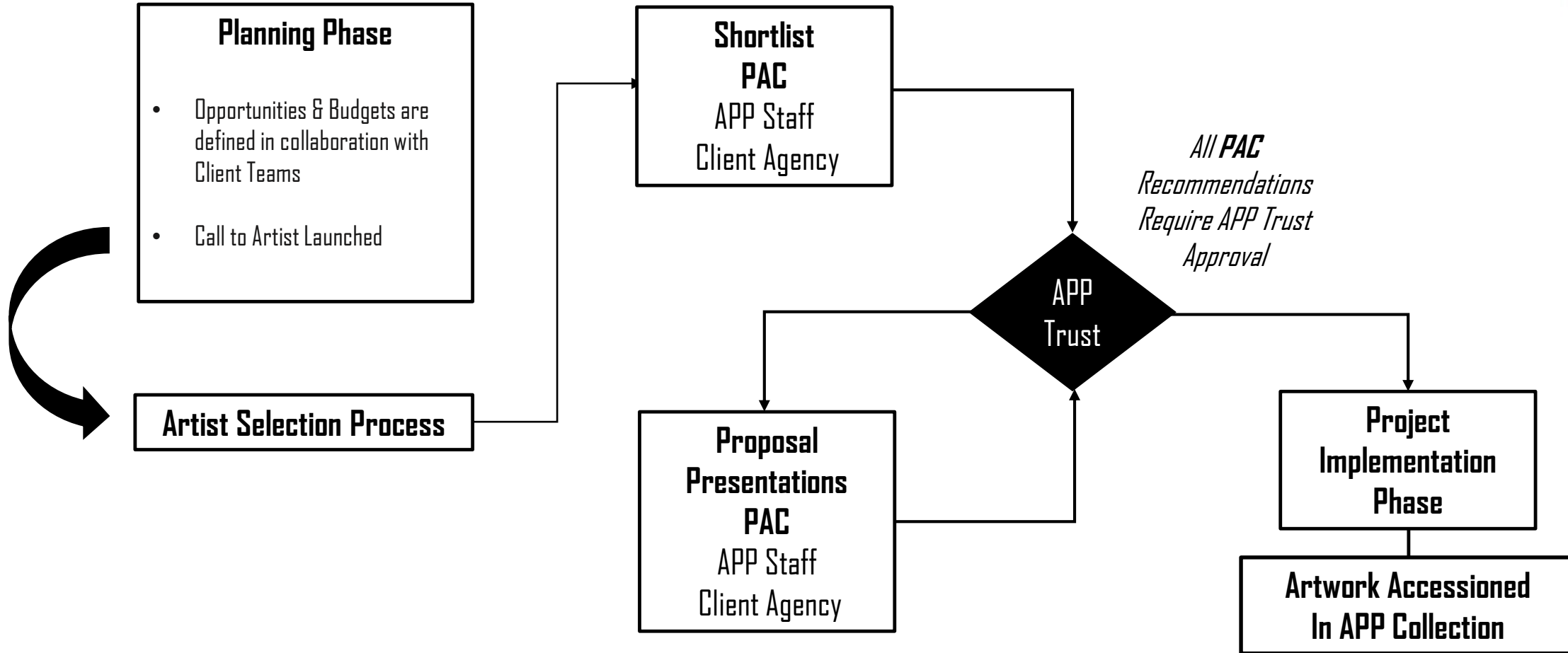
# Art in Public Places Trust

Art in Public Places is overseen by a citizens' Trust appointed by the Board of County Commissioners. The Trustees act in the public interest upon all matters related to the program and support the program's goals and objectives. The Trustees' responsibilities include the selection, maintenance, planning, public education, and curating of all works of art acquired by the program.

Claudia Comte, *Three Big Marble Corals*, 2021  
Norwegian Cruise Terminal B, PortMiami



# Process



# Implementation

APP manages Artist Contract through Design, Fabrication, and Installation of the work  
APP takes an Active Role in the Client's Project Management Team



Luis Gispert, *Every Separation is a Link*, 2023  
Gallery on the River



Luis Gispert, *Every Separation is a Link*, 2023  
Gallery on the River

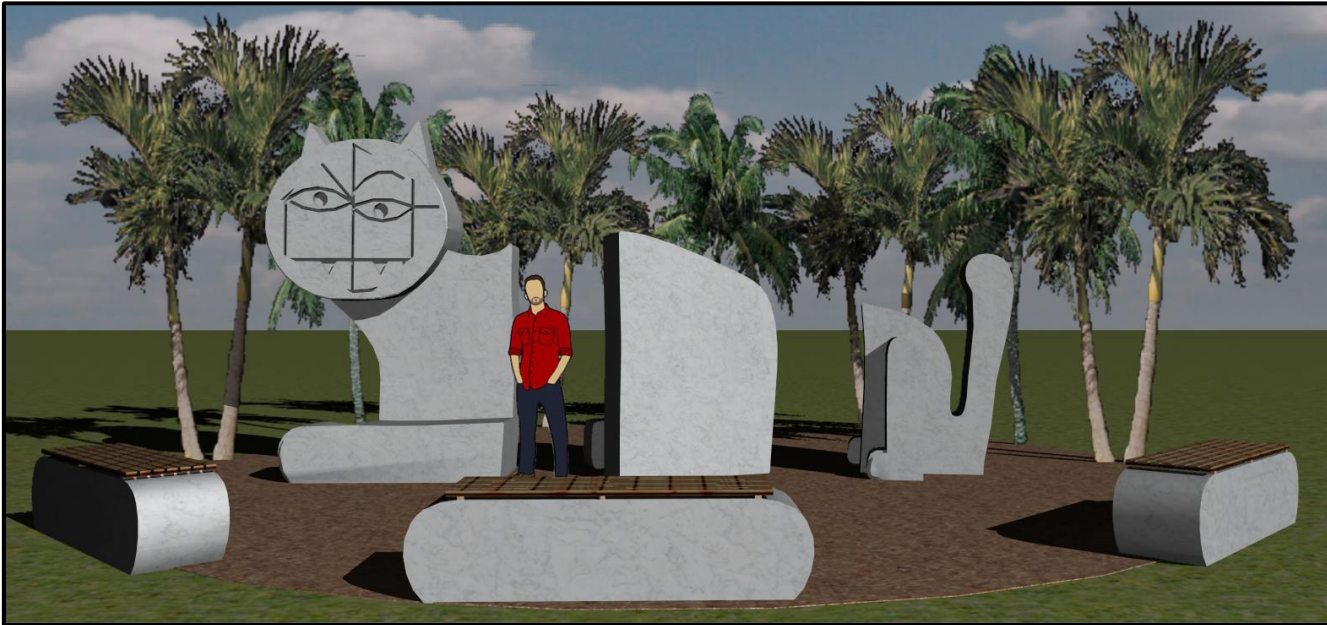
# Team

Art in Public Places is a division of the Miami-Dade County Department of Cultural Affairs, one of the three largest cultural affairs departments in the nation.

The Art in Public Places team is comprised of a number of specialists in the field of public art with a wide range of expertise in architecture, construction, project and collection management, and curatorial affairs, and is overseen by the Department of Cultural Affairs.



# From Concepts to Commissions...

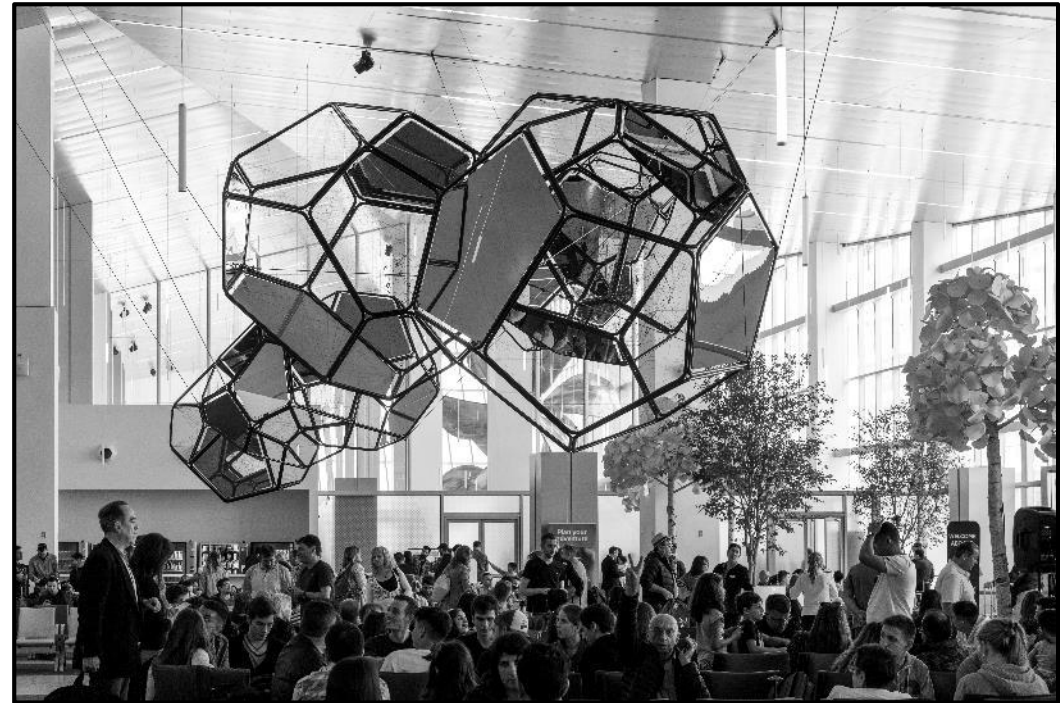
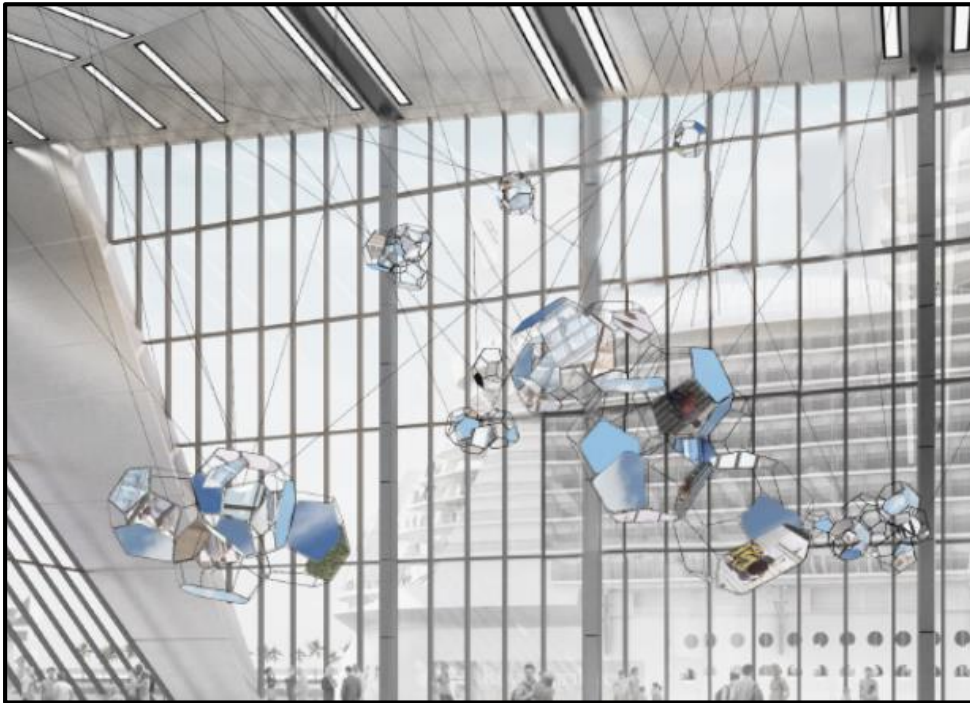


Olaf Breuning, *The Cat*, 2020  
Jackson Rehabilitation Center





Karen Rifas, *Welcome to the Village*, 2019  
Caribbean Village



Tomás Saraceno, *Space Moving Light*, 2019  
Royal Caribbean Terminal A, PortMiami

# Long Term Care

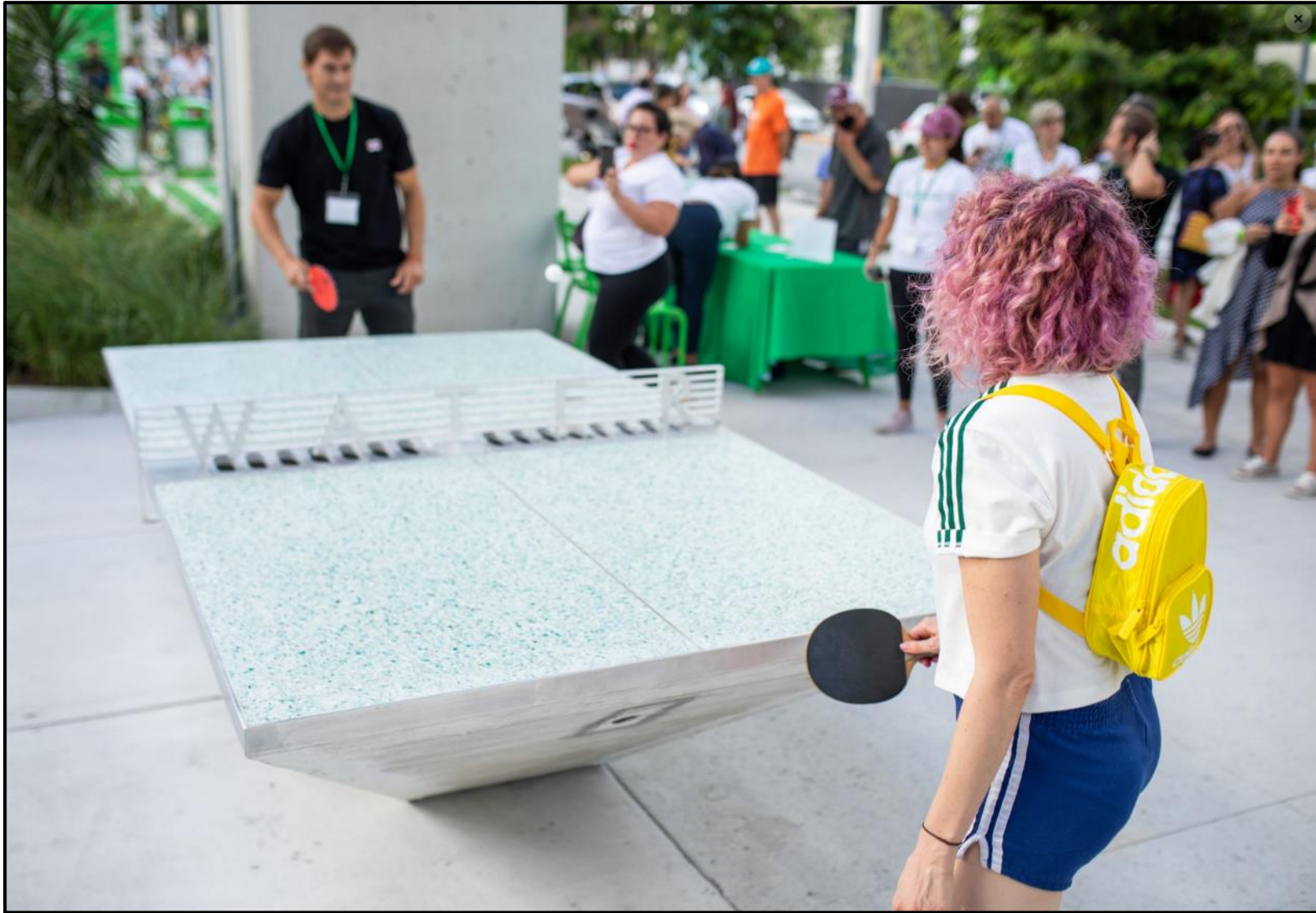
## Restoration and Maintenance Program

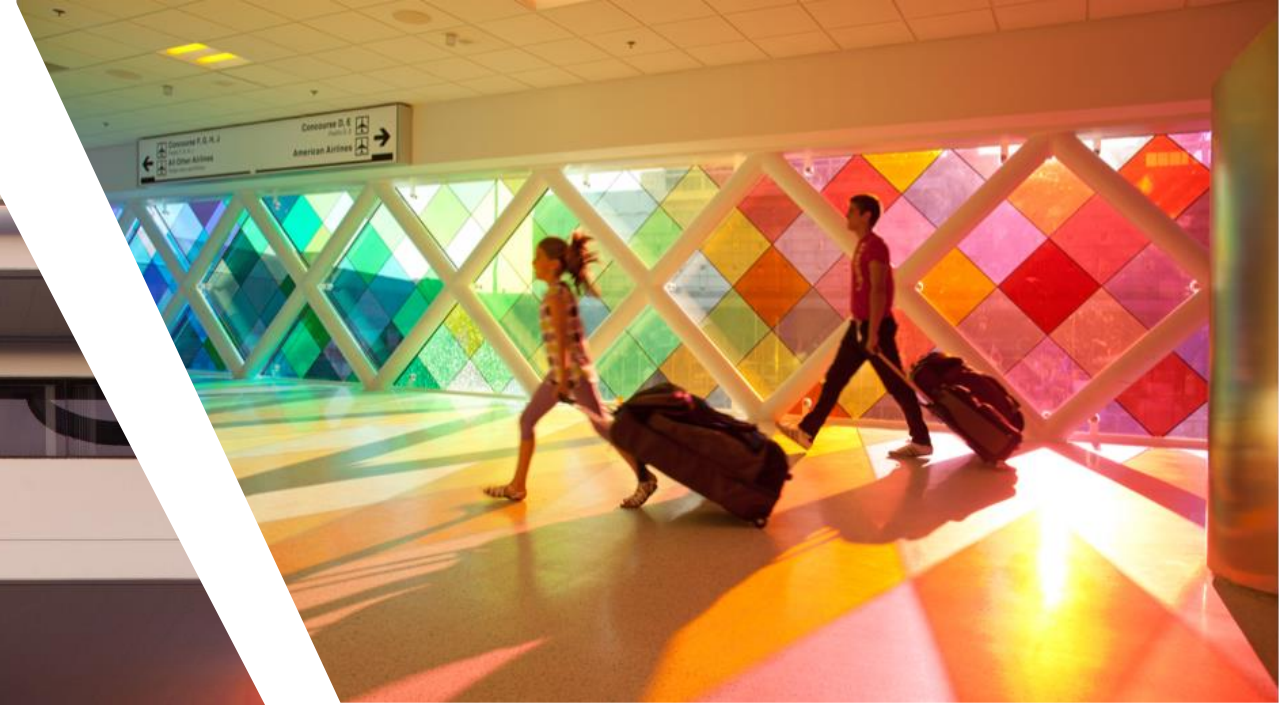
APP artworks come with a lifetime warranty:

- Client is responsible for day to day care
- APP is responsible for specialized repairs



Cara Despain, *Water/Tables*, 2021  
The Underline, Brickell Backyard







Jose Bedia; Robert Zakanitch, Ana Murch (Clockwise)  
Adrienne Arsht Center for the Performing Arts

# Collection



Art in Public Places commissions permanent works of public art from local, national, and international contemporary visual artists. The program's commissions and acquisitions contribute to and reflect the critical dialogues and artistic methodologies of the time, while embracing the unique context of South Florida. Accessioned artworks join an internationally renowned collection of over 1,000 artworks and are preserved through a lifetime Maintenance and Repair Program.

The Artbank represents a holding of largely two dimensional artworks that are installed through an inter-county loan program throughout County facilities.

Visit the collection at [www.miamidadepublicart.org](http://www.miamidadepublicart.org)

NEW WEBSITE UNDER CONSTRUCTION! FALL 2023....

*Snarkitecture, A Memorial Bowling, 2012*  
Marlins Ballpark



*Snarkitecture, A Memorial Bowling, 2012*  
Marlins Ballpark



# Where we are now...Program Overview

**Public Art Collection**  
**Over 1000 works**

Including

ArtBank of  
Two-Dimensional  
&  
Three-Dimensional Works

Site-Specific Works  
&  
Integrated Works

**Economic Impact**

\$7.5 million  
Annual Operating Budget

12  
Open Call to Artists

132  
Shortlisted Artists

\$1150.<sup>00</sup>  
Avg Proposal Fee

**Current Program Portfolio**  
**151**

Active Commissions  
100+

In Planning Phase  
28

Conservation & Collection Management  
12

# Connect

@artinpublicplacesmdc

[www.miamidadepublicart.org](http://www.miamidadepublicart.org)

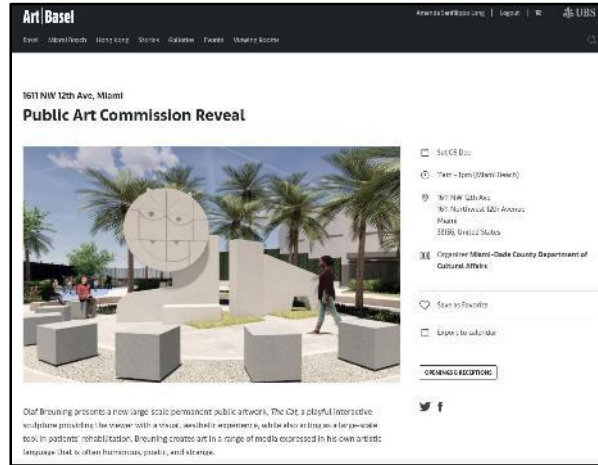
ArtistRegistry Newsletter



ART IN  
PUBLIC  
PLACES  
MIAMI-DADE COUNTY

Michele Oka Doner, *Sargassum*, 2012  
MIC Center, MIA

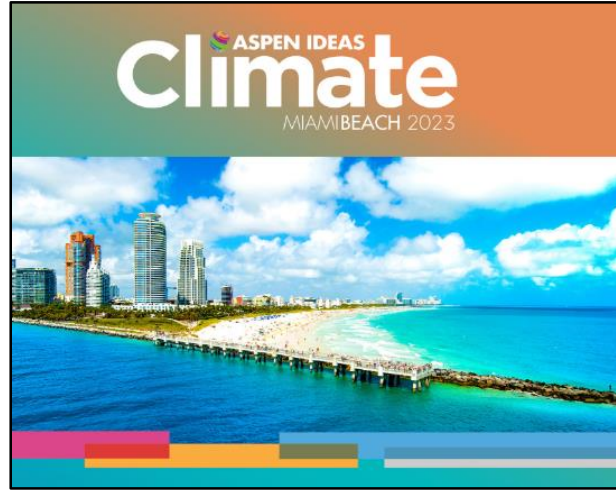
# Public Programming



Conferences

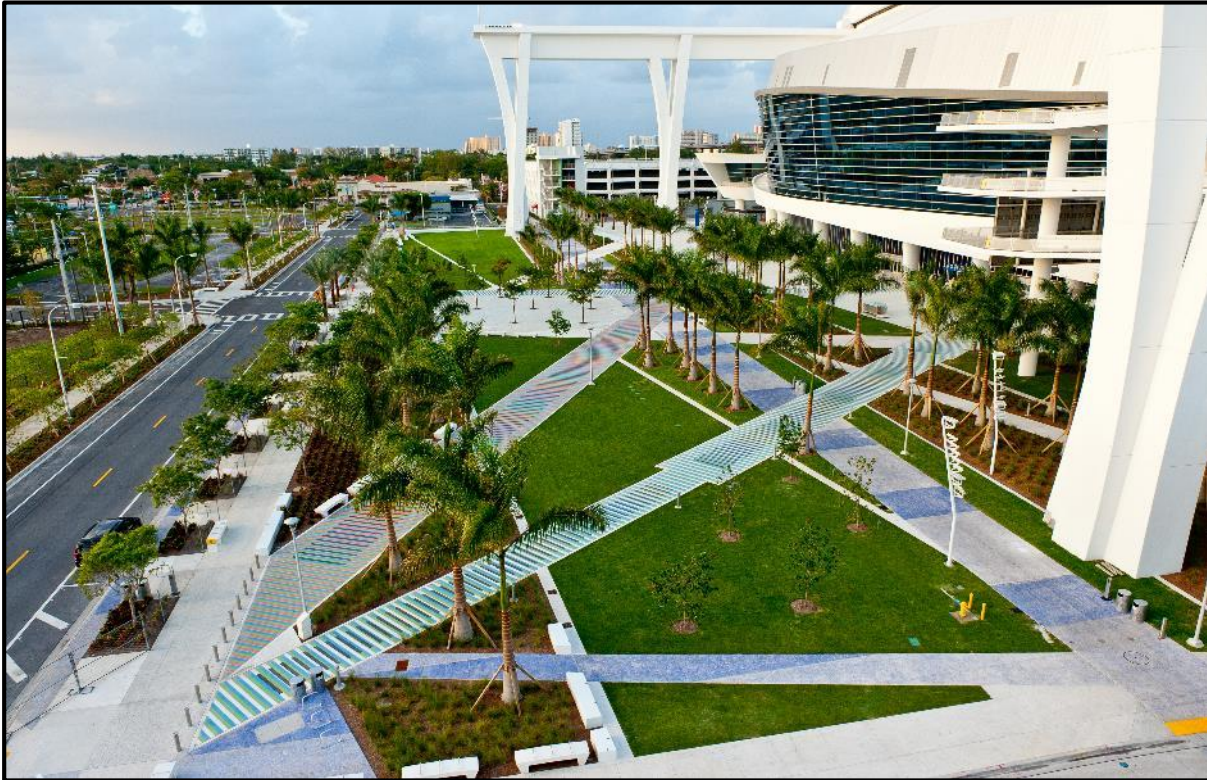
Tours

Exhibitions



Snarkitecture, *A Memorial Bowling*, 2012  
Marlins Ballpark

# Research



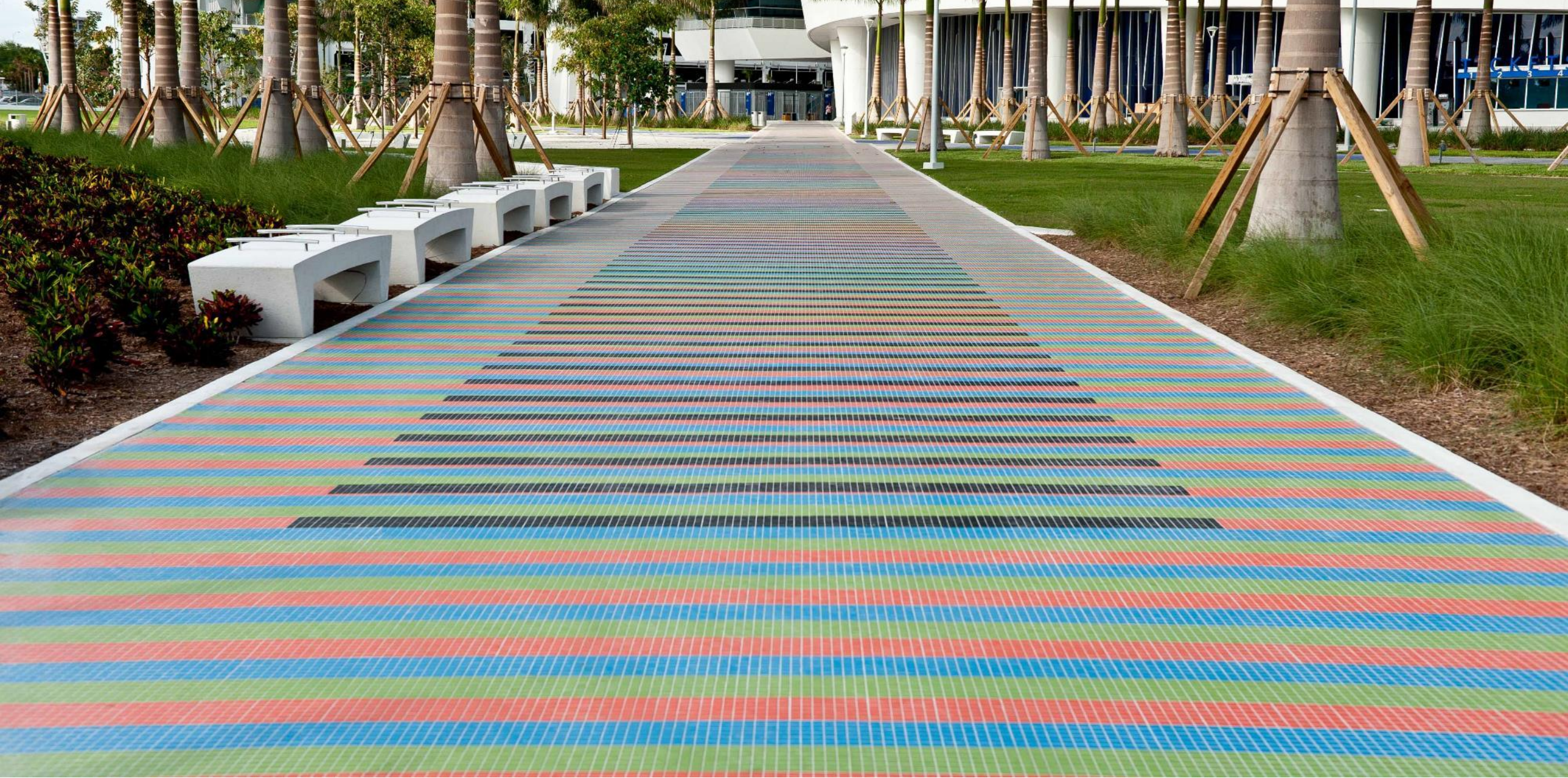
Procedures Manuals

Online Collection

Archives

Library

Carlos Cruz-Diez, Chromatic Induction in a Double Frequency, 2012  
Marlins Ballpark





Hank Willis Thomas and Nekisha Durrett, 2019  
Audrey M. Edmonson Transit Village and Sandrell Rivers Theatre

Public Art

*Transforms* every day experiences of public  
spaces from ordinary to extraordinary

*Encourages* people to engage with the  
surrounding built environment

Public Art

*Educates, Entertains, and Provokes Thinking*  
without compromising its excellence  
in the world of fine arts

Case Study  
Virgin Voyages  
Terminal V, PortMiami



Miami-Dade County  
Department of Cultural Affairs  
Art in Public Places

Virgin Voyages  
Terminal V - Port Miami



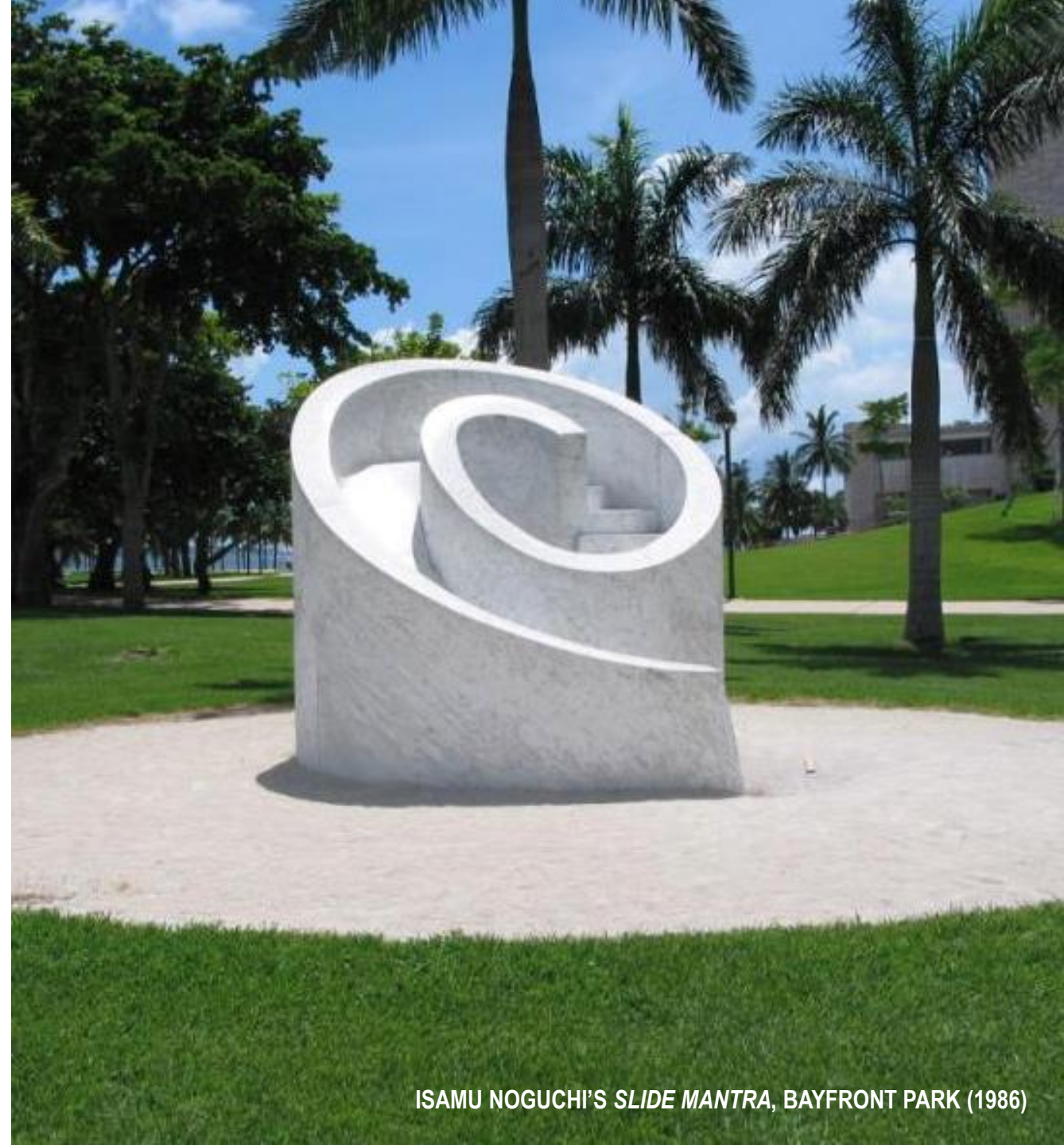
# South Florida Call to Artists

## ART IN PUBLIC PLACES OF THE MIAMI-DADE COUNTY DEPARTMENT OF CULTURAL AFFAIRS IS A NATIONALLY RENOWNED PUBLIC ART COMMISSIONING PROGRAM

One of the first public art programs in the United States, Art in Public Places was established in 1973 with the passage of an ordinance allocating 1.5% of capital costs of new local government buildings for the purchase or commission of artworks in Miami-Dade County. Art in Public Places is overseen by a citizens' Trust appointed by the Board of County Commissioners. The Trust receives recommendations on acquisitions and commissions from the Professional Advisory Committee, an independent group of professionals in the field of art, art history, public art, architecture, landscape architecture and architectural history.

Art in Public Places strives to commission significant permanent works of public art from local, national, and international contemporary visual artists. The program's commissions and acquisitions contribute to and reflect the critical dialogues and artistic methodologies of the time, while embracing the unique context of South Florida. Accessioned artworks join an internationally renowned collection of over 1,000 artworks and are preserved through a lifetime Maintenance and Repair Program.

Art in Public Places is dedicated to enriching the public environment and to preserving and enhancing the artistic and civic pride of Miami-Dade County. Art in Public Places promotes collaboration and commissions that improve the visual quality of public spaces, transforming them from ordinary civic areas to places that can lift the spirit and connect with the community.



# Brief

Miami-Dade County Department of Cultural Affairs through its Art in Public Places Program and Miami-Dade County, PortMiami and Virgin Voyages request qualifications for artists to be considered to make full proposals for the new Terminal V at PortMiami. The selected artist(s) will design unique artwork(s) that will contribute to the identity of this facility and engage employees, visitors and passers-by in unexpected and delightful ways.

Opportunities for public art include a large-scale text-based artwork application to exterior north wall, a suspended lighting feature, integrated sculptural wall applications, and free-standing artist designed-planters for the terminal's interior and exterior.

## How to Apply

Deadline: Monday August 24, 2020, 11:59PM

10 Images completed work  
CV & Brief Statement

## Submit at:

<http://www.miamidadepublicart.org/#about-calls>

## Total Project Budget

\$995,000

*\*3-5 commissions are envisioned*

*\*Construction credits for integrated artworks may enhance the total project budget.*

## Eligibility

Open to professional visual artists based in South Florida

## Location

PortMiami, Terminal V  
905 S America Way, Miami, FL 33132  
(Prior Location of Terminal H)





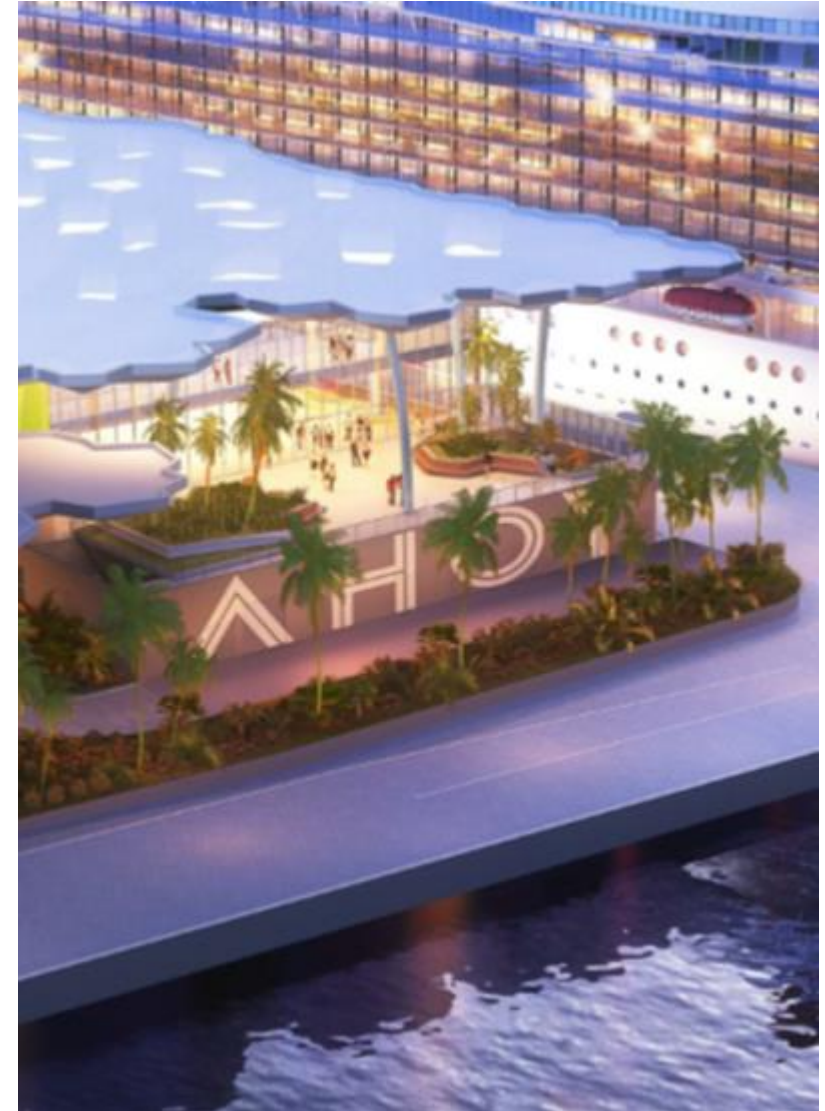
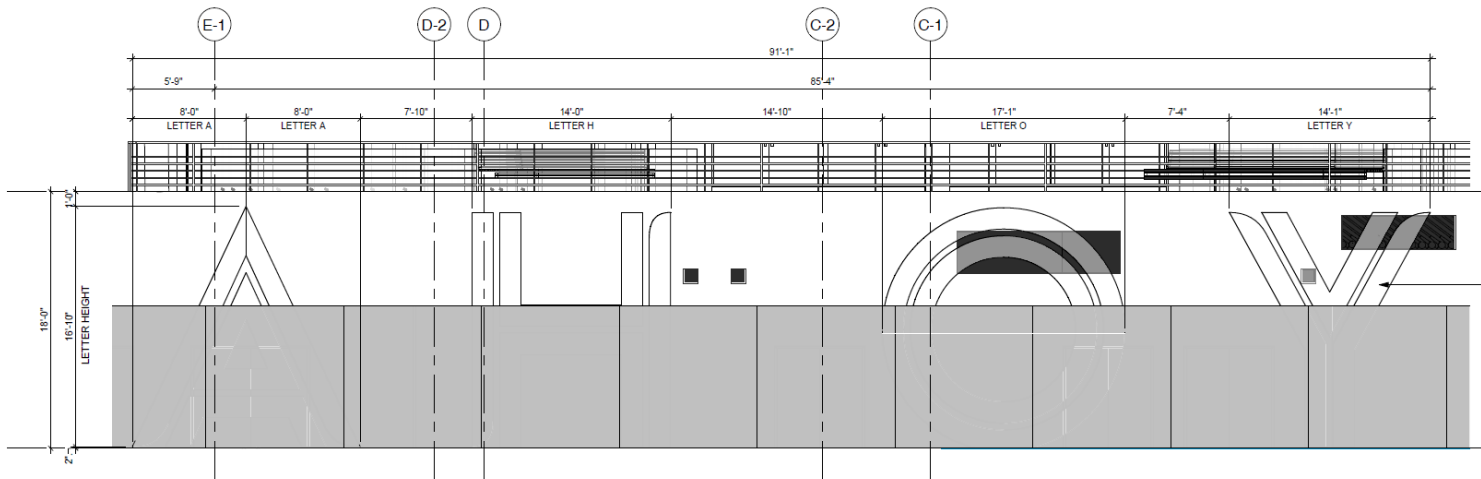
The new 100,000 square foot Virgin Voyages terminal will be a palm grove inspired design concept developed by the Miami-based designers from Arquitectonica. This concept encompasses a design that builds on Virgin Voyages' design ethos of the Modern Romance of Sailing, a thoroughly new take on the formal grandeur and opulence of the ocean liner heyday that heroes ocean views with a thoughtful root in history and tradition. The palm grove design is inspired by Miami Beach's iconic palm trees and the island's historical origins as an area intended for harvesting coconuts. The terminal's rooftop is designed to resemble a palm tree grove with rooftop pockets that allow natural light to flow into the building by day, and uplighting by night that will light up the company's iconic Virgin Voyages red logo and allow the facility to shine bright, mirroring the city's skyline. The two-story storm-proof glass facility will be replete with lush landscaping giving the terminal a plaza-like feel with designated areas for drop offs of VIP's, ride-sharing and provisioning, designed to provide a seamless shore to ship experience.





## Text-Based Exterior Wall Application

- Text-based artwork application to exterior wall facing north, 18 feet tall and approximately 92 feet wide.
- Visible from MacArthur Causeway and Watson Island
- Applications are encouraged to be permanent, withstanding harsh weather conditions and not limited to paint applications.
- Client seeks text-based work aligned with themes of Virgin Voyages, tropical vernaculars, adventure, and sailing



## Suspended Light-based Feature

- Suspended lighting feature intended to be installed within the Terminal's VIP lounge and bar
- Electricity infrastructure is existing





## Integrated Sculptural Walls

- Sculptural wall relief and / or cladding for interior walls
- Create statement entrance and flow / wayfinding experience from entrance from VIP lobby into the VIP lounge and components (bar, restroom, amenities)



## Planter Sculptures/ Seating Elements

- Stand-alone sculptural planting and seating elements
- Intention to be placed throughout interiors and exterior decks of Terminal



## Time-based Media Video Wall

Upon entering the terminal, guests will experience a triple-height welcome area which will prominently feature a configuration of LED screens.

Shortlisted artists will be invited to create proposals for this large-scale time-based media wall with two options:

1. Artists are invited to propose content / time based media artwork designed for the configuration of screens and technology recommended by the client (32 LED screens, 1 x 36' vertical panels as seen in image on right)
2. Artists are invited to propose an original design and configuration of LED screens AND the content / time-based media artwork.

It is intended that the screen system and artwork compliment the architecture and highlight themes related to Virgin Voyages, nature, palm groves, water, and tropical vernaculars. Only the commissioned artwork will be displayed on the screens.





# Estimated Schedule

*This schedule is subject to change*

<b>Estimated Project Schedule</b>	<b>Terminal V - PortMiami</b>
Architect Review Call to Artists	July 2020
Call to Artists Released & Promoted	July 17, 2020
Application Deadline	August 24, 2020
Initial PAC: Short List Recommendations	August 25-28, 2020
APP Trust: Approval of Short List and Proposal Contracts	September 8, 2020
Artist Orientation or Conference Call	September 22-25, 2020
Artist Concept Consultation	October 1-2, 2020
Artist Draft Proposals Review	October 23, 2020
PAC: Short List Artist Presentations and Finalists Recommendation	October 26-30, 2020
Trust: Approval of Finalist Recommendation	November 10, 2020
Selected Artist Notice to Proceed with Design Development	Mid-November 2020
Project Completion	August 2021



# How To Apply

## DEADLINE

Monday, August 24, 11:59PM

## SUBMIT

- 10 samples of completed work
- CV
- Brief artist statement

## SUBMIT AT

<http://www.miamidadepublicart.org/#about-calls>

Artists are invited to identify each work sample with the medium, dimensions, date, location, client/agency, size, budget, completion date (if applicable), and brief written description. Artists who work in video, sound, installations, and kinetic sculpture may submit a short selection of video, audio or dynamic media file. The application platform, Submittable, is free to register and use. Artists are not invited to submit proposal concepts at this time.

*PLEASE, NOTE THAT UPON SHORTLIST RECOMMENDATION, ART IN PUBLIC PLACES WILL CONTRACT DIRECTLY WITH AND COMMUNICATE SOLELY WITH THE ARTIST AND/OR HIS OR HER DESIGNEES.*

*ARTIST REPRESENTATIVES INCLUDING GALLERISTS OR OTHER THIRD PARTIES ARE ENCOURAGED TO SUBMIT QUALIFICATIONS ON BEHALF OF AN ARTIST; WITH THE ARTIST'S EXPLICIT CONSENT AND ACKNOWLEDGEMENT THAT ALL FURTHER COMMUNICATIONS AND CONTRACTUAL RELATIONS ASSOCIATED TO THIS OPPORTUNITY ARE TO BE DIRECTLY HANDLED BY THE ARTIST AND/OR HIS OR HER DESIGNEES.*

### **For questions, please contact:**

Amanda Sanfilippo Long  
Curator & Artist Manager, Art in Public Places  
Miami-Dade County Department of Cultural Affairs  
111 NW 1<sup>st</sup> Street, Ste. 625, Miami FL 33128  
[amandas@miamidade.gov](mailto:amandas@miamidade.gov)  
305-375-5436



# Process

Pursuant to the processes of the Miami-Dade County Art in Public Places Program, a three-member group of art and architectural professionals drawn from the Professional Advisory Committee (PAC) will recommend a shortlist of artists to create full proposals to the Art in Public Places Trust. The primary criteria for shortlist selection will be previous artistic accomplishment as demonstrated in images of completed artwork, public art experience, and/or initial design approach to the project as demonstrated in the artist's statement. Artists who have not created public art before are warmly invited to apply. If appropriate, the PAC reserves the right to recommend artists who may not have applied to this Call.

Upon being recommended to prepare full proposals, shortlisted artists will receive detailed information regarding the opportunities for public art. Artists will also be invited to attend a site visit and Artist Orientation meeting, and will have the opportunity to meet with the client, including the design & the construction teams, and Art in Public Places staff.

Shortlisted Artists will receive a proposal honorarium commensurate to the number of proposals they present, as well as an allowance for travel-related expenses for personally attending the recommended meetings in Miami-Dade County including the Artist Orientation and final proposal presentation meeting. Artists may choose to present their final proposals via video conference. Art in Public Places staff will be available to support inquiries throughout the process. Upon the presentation of proposals, the PAC will again make recommendations for final commissions to the Art in Public Places Trust for their consideration.

# About the Partners

## **ABOUT MIAMI-DADE COUNTY DEPARTMENT OF CULTURAL AFFAIRS, ART IN PUBLIC PLACES**

One of the first public art programs in the country, Miami-Dade Art in Public Places was established in 1973 with the passage of an ordinance allocating 1.5% of construction cost of new county buildings for the purchase or commission of artworks, educational programs and collection maintenance. The Art Trust Fund is administered by a County Commission-appointed citizens' board, the Art in Public Places Trust, in consultation with its Professional Advisory Committee. The Miami-Dade County Department of Cultural Affairs and the Cultural Affairs Council develop cultural excellence, diversity and participation throughout Miami-Dade County by strategically creating and promoting opportunities for artists and cultural organizations, and our residents and visitors who are their audiences. Through staff, board and programmatic resources, the Department, the Council and the Trust promote, coordinate and support Miami-Dade County's more than 1,000 not-for-profit cultural organizations as well as thousands of resident artists through grants, technical assistance, public information and interactive community planning. The Department directs the Art in Public Places program and serves its board, the Art in Public Places Trust, commissioning, curating, maintaining and promoting the County's art collection. The Department receives funding through the Miami-Dade County Mayor and Board of County Commissioners, The Children's Trust, the National Endowment for the Arts, the State of Florida through the Florida Department of State, Division of Cultural Affairs and the Florida Council on Arts and Culture, and the John S. and James L. Knight Foundation. Other support and services are provided by TicketWeb for the Culture Shock Miami program, the Greater Miami Convention and Visitors Bureau, the South Florida Cultural Consortium and the Tourist Development Council. [www.miamidadepublicart.org](http://www.miamidadepublicart.org) and [www.miamidadearts.org](http://www.miamidadearts.org)

## **ABOUT MIAMI-DADE COUNTY SEAPORT / PORTMIAMI**

PortMiami is Miami-Dade County's second most important economic engine, contributing \$41.4 billion annually to the local economy and supporting more than 324,352 jobs in South Florida. It is recognized as the Global Gateway. Miami's unique geographic position makes the Port easily accessible to Caribbean and Latin American markets, as well as those of Asia and Europe by way of the Panama Canal. PortMiami is also known worldwide as the Cruise Capital of the World, welcoming more cruise passengers to its terminals than any other port in the world.

## **ABOUT VIRGIN VOYAGES**

Virgin Voyages is a global lifestyle brand committed to creating the world's most irresistible holiday. With operations in the US, UK and Europe, Virgin Voyages currently has four ships on order with master shipbuilder Fincantieri. With its inaugural season scheduled for 2020, Virgin Voyages' first ship the Scarlet Lady was designed to reflect a yacht's sleek luxury. Featuring spaces designed by some of the top names in contemporary interiors, the Scarlet Lady will be Adult-by-Design, a sanctuary at sea for the 18+ traveler. A dose of 'Vitamin Sea' will be naturally intertwined across the entire ship, with well-being activated through a mix of high-energy moments coupled with relaxation and rejuvenation. The Scarlet Lady will also feature alluring entertainment and 20+ world-class intimate eateries onboard. Putting a twist on luxury, which the company refers to as Rebellious Luxe, Virgin Voyages will offer incredible value for its sailors with all restaurants, group fitness classes, soft drinks, and many more Virgin surprises included within the voyage fare. The Scarlet Lady, will sail from Miami to the Caribbean in 2020, hosting more than 2,770 sailors and 1,160 amazing crew from around the world. Keep watch on [virginvoyages.com](http://virginvoyages.com) for more updates.



# About the Partners

## **ABOUT ARQUITECTONICA**

With offices in Miami, New York, Los Angeles, Paris, Hong Kong, Shanghai, Manila, Lima and Sao Paulo, Arquitectonica is a major presence on the international stage. From its inception in 1977, the firm received almost instant attention and acclaim from critics and the public alike, due to a bold modernism that was immediately identified with a renaissance in Miami's urban landscape. Led by Principals Bernardo Fort-Brescia and Laurinda Spear, Arquitectonica continues to push the limits of design with its innovative use of materials, geometry, pattern and color to introduce a new brand of humanistic modern design to the world. Arquitectonica has received hundreds of design awards and its groundbreaking work has been the subject of exhibitions at numerous museums and institutions. Arquitectonica is known as one of the pioneers of globalization in the architecture profession. Today its practice spans the world, with projects in fifty-nine countries on five continents. The firm's global presence includes the Microsoft Europe Headquarters in Paris, the Bronx Museum in New York City, Festival Walk and Cyberport Technology Campus in Hong Kong, the Agricultural Bank of China and China Construction Bank headquarters in Shanghai, the International Finance Center in Seoul, the Banco Real Santander Headquarters and JK Iguatemi in San Paulo, the Infinity and Lumina towers in San Francisco, the Philips Arena in Atlanta, and Brickell City Centre and the American Airlines Arena in Miami.

## **ABOUT BERMELLO AJAMIL ARCHIECTS**

Bermello Ajamil & Partners Inc. (BA) is a global interdisciplinary A/E firm established in 1939. Offering services that include Architecture, Engineering, Planning, Landscape Architecture, Interior Design and Construction, B&A serves various market sectors consisting of Aviation, Commercial, Education, Healthcare, Maritime, Municipal, Residential and Transportation. Headquartered in Miami, the firm operates on 6 continents from its offices in Florida, New York and Denmark and is highly recognized for its award-winning designs and extraordinary service. The firm's professional staff of over 100 talented individuals is always committed to embracing the client's vision and needs first. With an abiding promise to its clients and the communities that it serves, B+A has the unique expertise to connect projects on an intimate level and constantly evolve the quality of life in regions around the world. The firm has continuously developed innovative design technologies resulting in intelligent, sustainable solutions that enrich the built environment.

Artist Recommendation:  
Virgin Voyages – Local Artists  
January 28 & 29, 2021  
13 Local  
10 National

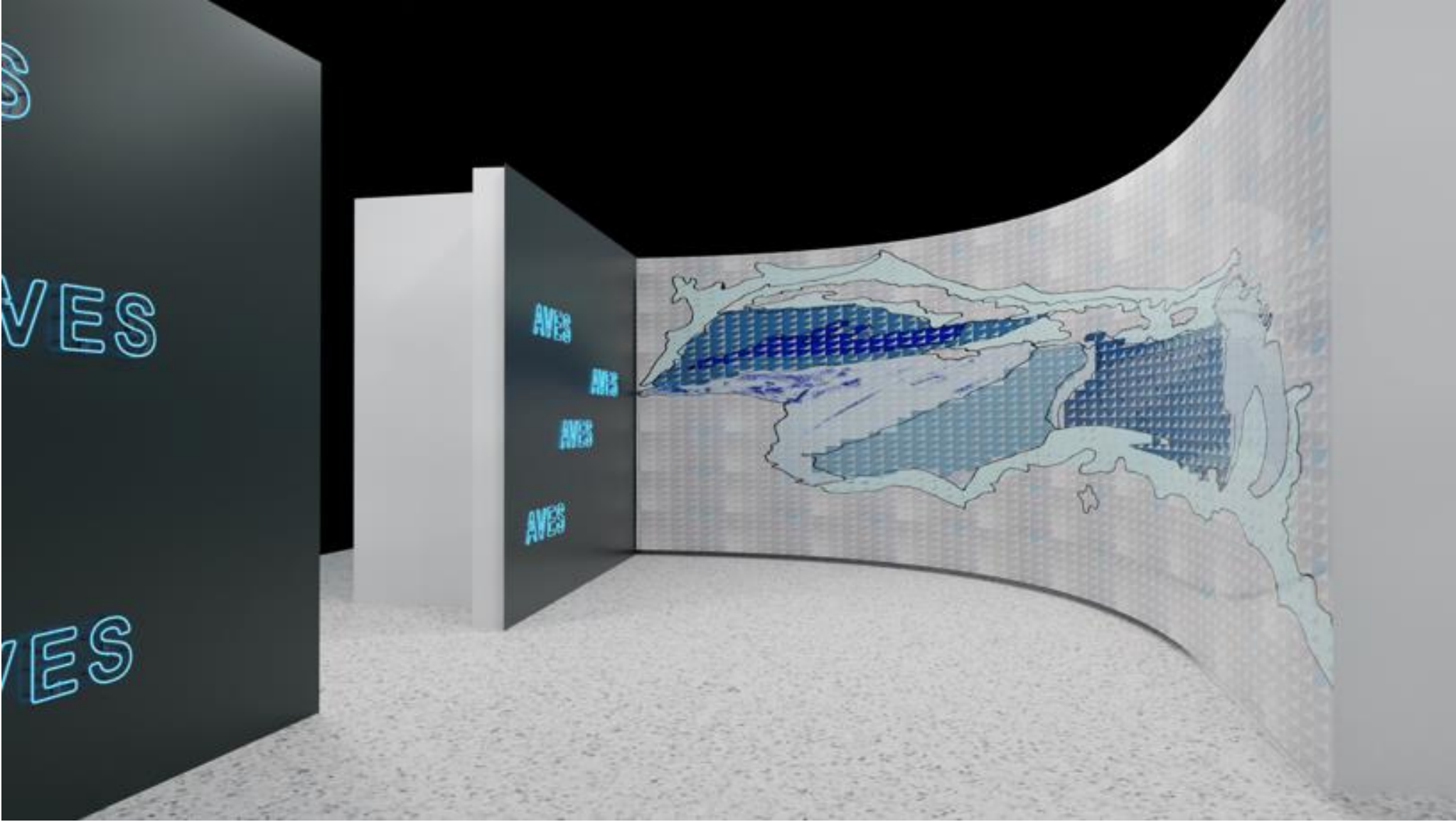
Miami-Dade County  
Art in Public Places  
Department of Cultural Affairs



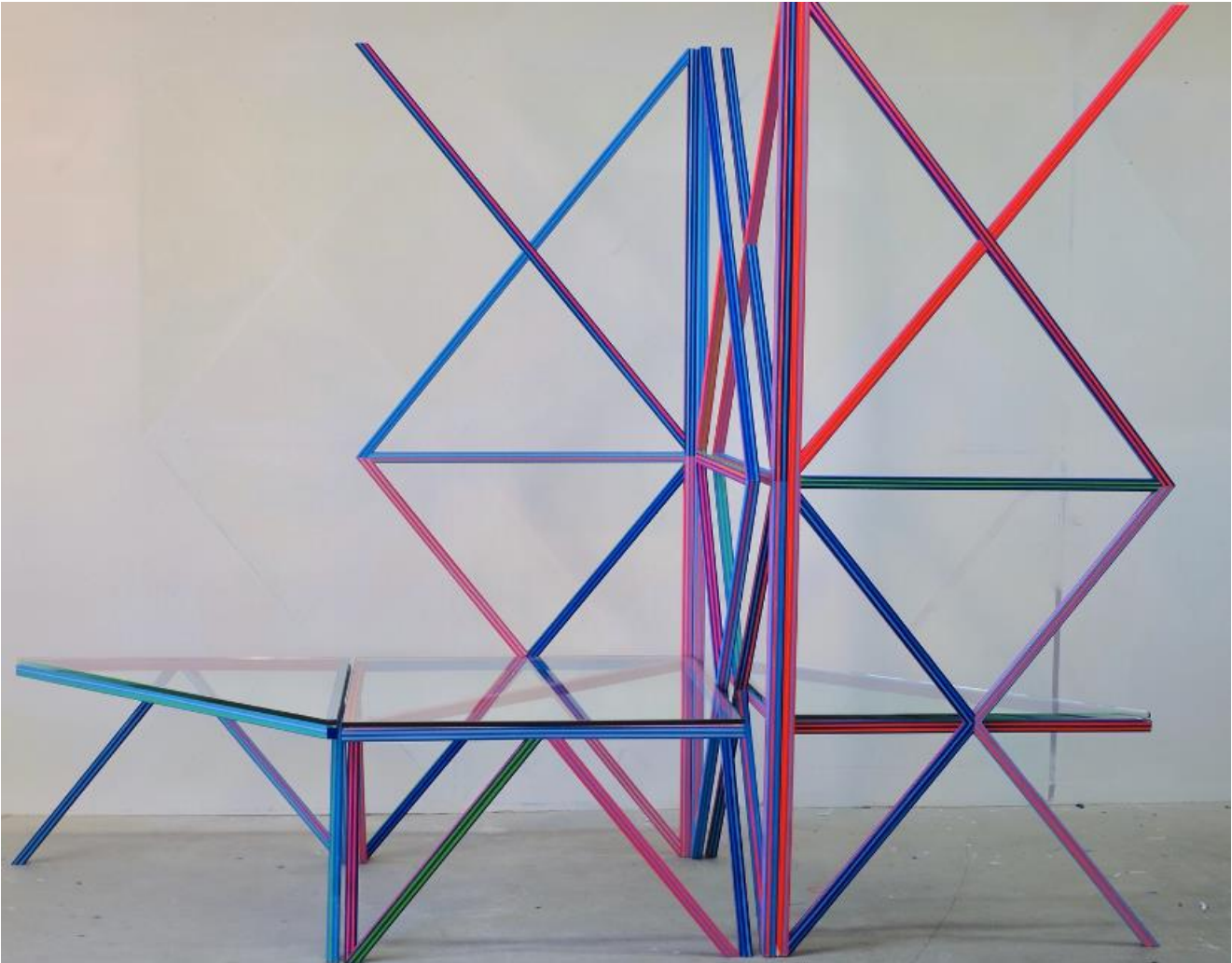


# JILLIAN MAYER

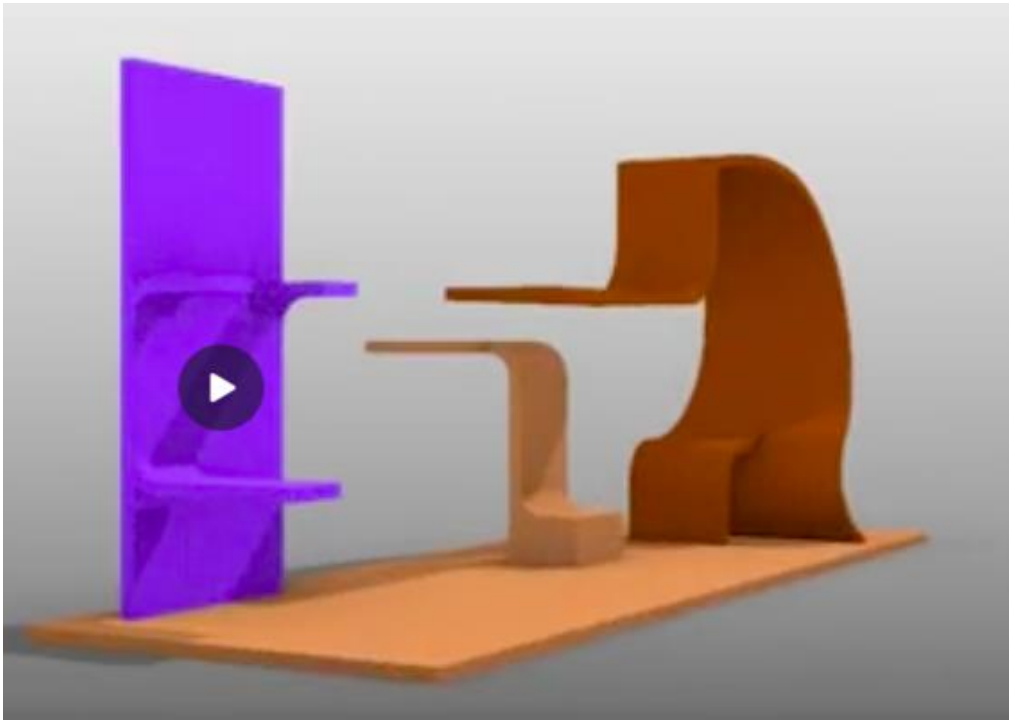
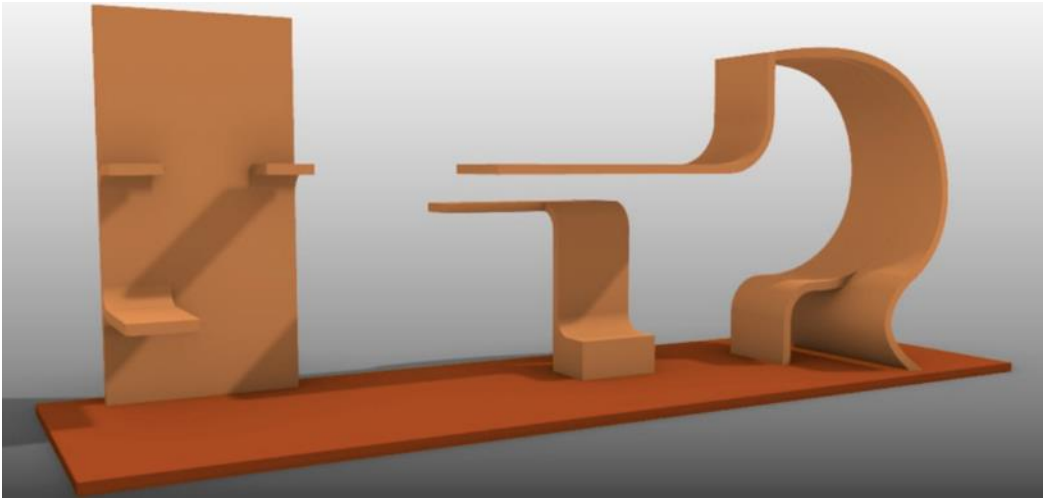
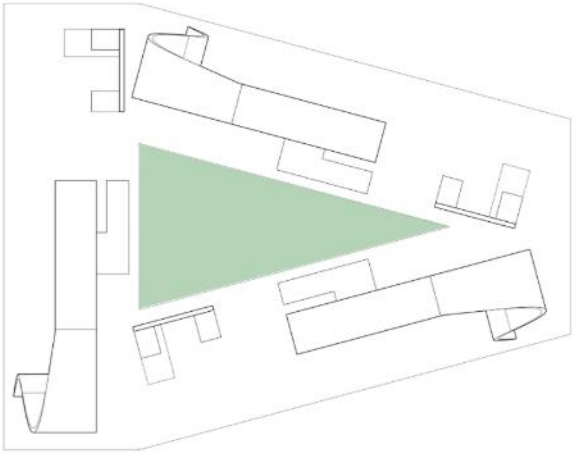




KELLEY JOHNSON



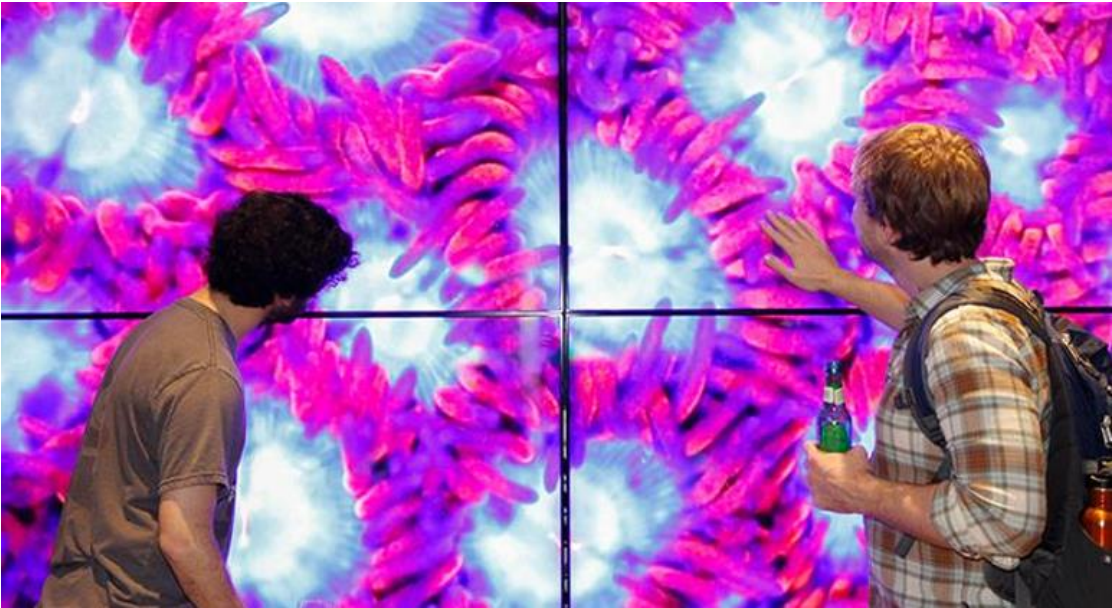
# NAJJA MOON







# CORAL MORPHOLOGIC





Project Completion  
Virgin Voyages – Terminal V  
Port Miami

Miami-Dade County  
Art in Public Places  
Department of Cultural Affairs



Dara Friedman  
Sunday





# Kelley Breeze

*A Nautical Love letter: Our City and The Sea*







# Kelley Johnson

*A Memory of Day  
Dreaming*







# Coral Morphologic Threshold







# Jillian Mayer

*Dropped Glass Ceiling*







# Jamilah Sabur

*In an Ocean of Air*



in an ocean of air

